

# **Horseshoe Crab Spawning Activity in Delaware Bay: 1999 – 2021**

## **Report to the Atlantic States Marine Fisheries Commission's Horseshoe Crab Technical Committee**

Jordan Zimmerman, Delaware Division of Fish and Wildlife,  
89 Kings Highway, Dover, DE 19901  
(302) 735-2976 / [jordan.zimmerman@delaware.gov](mailto:jordan.zimmerman@delaware.gov)

David Smith, USGS – Leetown Science Center,  
11649 Leetown Road, Kearneysville, WV 25443  
(304) 724-4467 / [drsmith@usgs.gov](mailto:drsmith@usgs.gov)

Jason Boucher, Delaware Division of Fish and Wildlife,  
89 Kings Highway, Dover, DE 19901  
(302) 735-2969 / [jason.boucher@delaware.gov](mailto:jason.boucher@delaware.gov)

Samantha MacQuesten, New Jersey Division of Fish and Wildlife,  
PO Box 418, Port Republic, NJ 08241  
(609) 748-2020 / [Samantha.MacQuesten@dep.nj.gov](mailto:Samantha.MacQuesten@dep.nj.gov)  
May 1, 2020

## Summary

- This annual report marks the twenty-third year that the Delaware Bay Horseshoe Crab Spawning Survey has been implemented in a standardized manner throughout May and June in the Delaware Bay.
- Annual coefficients of variation for estimates of female spawning activity were below 14% for the entire series and remained at or below 10% for the last sixteen years. Annual coefficients of variation for estimates of male spawning activity were below 20% for the entire series.
- Female spawning activity in 2021 peaked during the third lunar period sampled (June 8 – June 12) although the index of spawning activity was similar in the second and third lunar periods.
- The proportion of female spawning activity observed in May 2021 in New Jersey (54%) and Delaware (49%) was below means for the time series (New Jersey mean: 63%; Delaware mean: 55%).
- Baywide female spawning activity over the past 23 years showed no significant trend; though, the slope was slightly positive (Slope = 0.004, SE = 0.01, 90% CI = -0.01 to 0.01, P = 0.47)
- The trend from the index of female spawning activity exhibited a slightly positive slope in Delaware and New Jersey. Neither was statistically significant (DE Slope = 0.01, SE = 0.01, P = 0.90; NJ Slope = 0.01, SE = 0.01, P = 0.29).
- Baywide male spawning activity showed a significant increasing trend from 1999-2021 (Slope = 0.11, SE = 0.03, 90% CI = 0.05 to 0.16, P = 0.01) Trends in male spawning activity (Table 5; Figure 4a&b) exhibited a significant positive slope in both states (DE Slope = 0.09, SE = 0.04, P = 0.02; NJ Slope = 0.11, SE = 0.03, P = 0.01).
- Sex ratio in 2021 was 5.2:1(M:F). Sex ratios during the 23-year time series ranged from 3.1:1 to 5.6:1.

## Introduction

The Atlantic States Marine Fisheries Commission's (ASMFC) Interstate Fishery Management Plan for Horseshoe Crab (ASMFC 1998) required that the states of Delaware, Maryland and New Jersey implement pilot Horseshoe Crab spawning surveys based on "standardized and statistically robust methodologies". In January 1999, the ASMFC convened a workshop that established a framework for such surveys in the Mid-Atlantic region. The framework built upon existing Horseshoe Crab spawning survey efforts by Finn et al. (1991) and Maio (1998). Using funds from the U.S. Geological Survey's (USGS) State Partnership Program, a comprehensive pilot study was designed and implemented in Delaware Bay during the spring of 1999 (Smith et al. 2002). The U.S. Fish and Wildlife Service provided further funding in 2000 to continue the survey in its present form, and the Delaware Division of Fish and Wildlife (DE DFW) provided funding in subsequent years using Atlantic Coastal Fisheries Cooperative Management Act funds. The survey has been shown to provide levels of spatial and temporal coverage essential for understanding trends in spawning activity (Smith and Michels 2006).

The survey is an excellent example of state, federal, non-governmental organization (NGO), corporate and citizen cooperation. Survey coordination is contracted through Limuli Labs. Data entry is completed by staff from the New Jersey Department of Environmental Protection; USGS and DE DFW staff oversees data analysis and report preparation. The vast sampling effort is conducted by a large contingent of dedicated private citizens, state and federal agencies, corporations, and NGO's.

This report is a continuation of a series of statistical reports on the survey and is meant to compliment the ongoing series of reports issued by the survey coordinators, Ms. Benjie Swan and Dr. William Hall.

## **Survey Objectives**

The Delaware Bay Horseshoe Crab Spawning Survey has several important objectives:

- 1) Provide a reliable index of spawning activity to monitor the temporal and spatial distribution of Horseshoe Crab spawning activity for comparing baywide spawning among years, beach-level spawning within Delaware Bay, and distributions of spawning Horseshoe Crabs and shorebirds;
- 2) Increase our understanding of the relationship between environmental factors (tidal height, wave height, and water temperature) and spawning activity;
- 3) Promote public awareness of the central role of Horseshoe Crabs in shorebird population dynamics, Atlantic coast fisheries, and human health through the production of *Limulus* ameobocyte lysate (LAL).

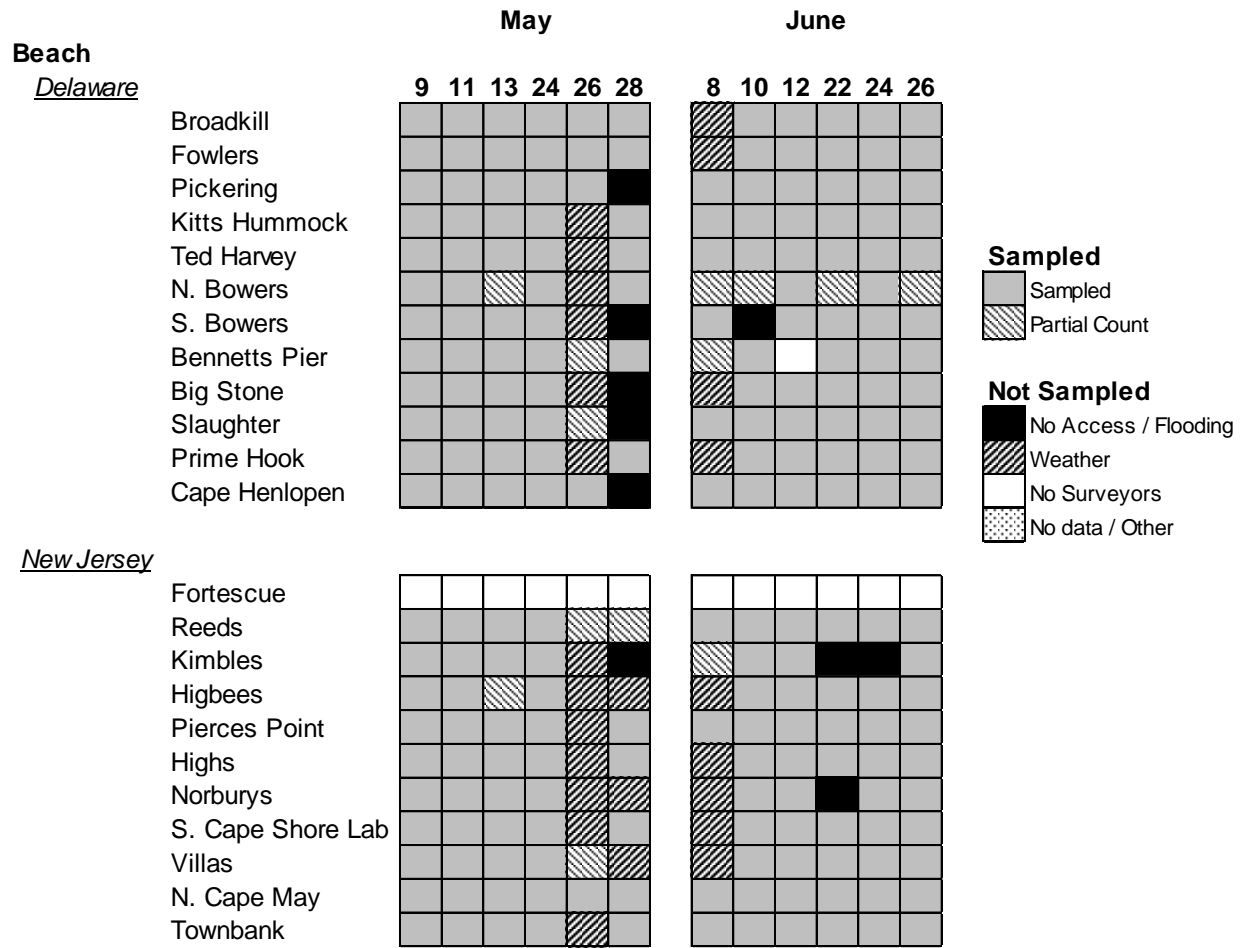
## **Data Availability**

The spawning survey database was converted to MS ACCESS in 2004. A visual basic program was also developed by USGS to calculate estimates of spawning activity in tabular and graphic form. The conversion process revealed a number of errors that were corrected and detailed in Smith and Bennett (2005). The overall patterns of spawning activity were largely unaffected by these corrections. Beginning in 2010, the previous software was no longer compatible with updated Windows OS, so the SPAWNr program was developed by Dr. David Smith (USGS) to calculate estimates of abundance. Data used in this report (both estimates and raw data) and the software used to calculate estimates are available by request.

## **Summary Results**

Sampling was conducted during twelve nighttime high tides from 9 May through 26 June. Twenty-two beaches were sampled in the Delaware Estuary – 12 in Delaware and 10 in New Jersey. The total number of tides sampled over the season was 228, as 40 sampling events were canceled due to no access, poor weather conditions (lightning), or no surveyors (Table 1). A total of 36 missed sampling events occurred in the second and third lunar period when spawning Horseshoe Crabs were abundant.

Table 1. Beaches sampled in the 2021 Delaware Bay Horseshoe Crab Spawning Survey.



Temporal Spawning Distribution

Horseshoe Crab spawning phenology is an important factor to examine as it gives an indication of the timing of potential food availability to migratory shorebirds. The time of spawning may also affect the survival of egg, larvae and juvenile stages.

State-specific female spawning activity peaked in Delaware in the first lunar period (May 9 – May 13) while peak spawning abundance in New Jersey occurred in the second lunar period (May 24 – May 28) (Figure 1), however, spawning activity in both states was also high in the third lunar period. Forty-nine percent (49%) of the annual female spawning activity in Delaware and 54% of the annual female spawning activity in New Jersey was observed in May (Table 2). The proportion of annual state-specific spawning activity that occurred in May was higher in New Jersey than Delaware for all but six years of the 22-year survey.

Water temperature is believed to influence the time of spawning (Smith and Michels 2006). A strong association between average May water temperatures recorded at Lewes, DE and the percentage of state-specific female spawning activity in May has been demonstrated every year in this report (Figure 2). Again, in 2021,

there was a strong association between average May water temperatures recorded at Lewes, DE and the percentage of state-specific female spawning activity in May ( $r_{DE} = 0.62$ ,  $P_{DE} = 0.01$ ;  $r_{NJ} = 0.67$ ,  $P_{NJ} = 0.01$ ; Figure 2).

Baywide female spawning activity peaked in the third lunar period in 2021 (Table 3). The second lunar period is critical to shorebird foraging as it coincides with peak stopover period for migratory shorebirds in Delaware Bay (McGowan et.al 2011).

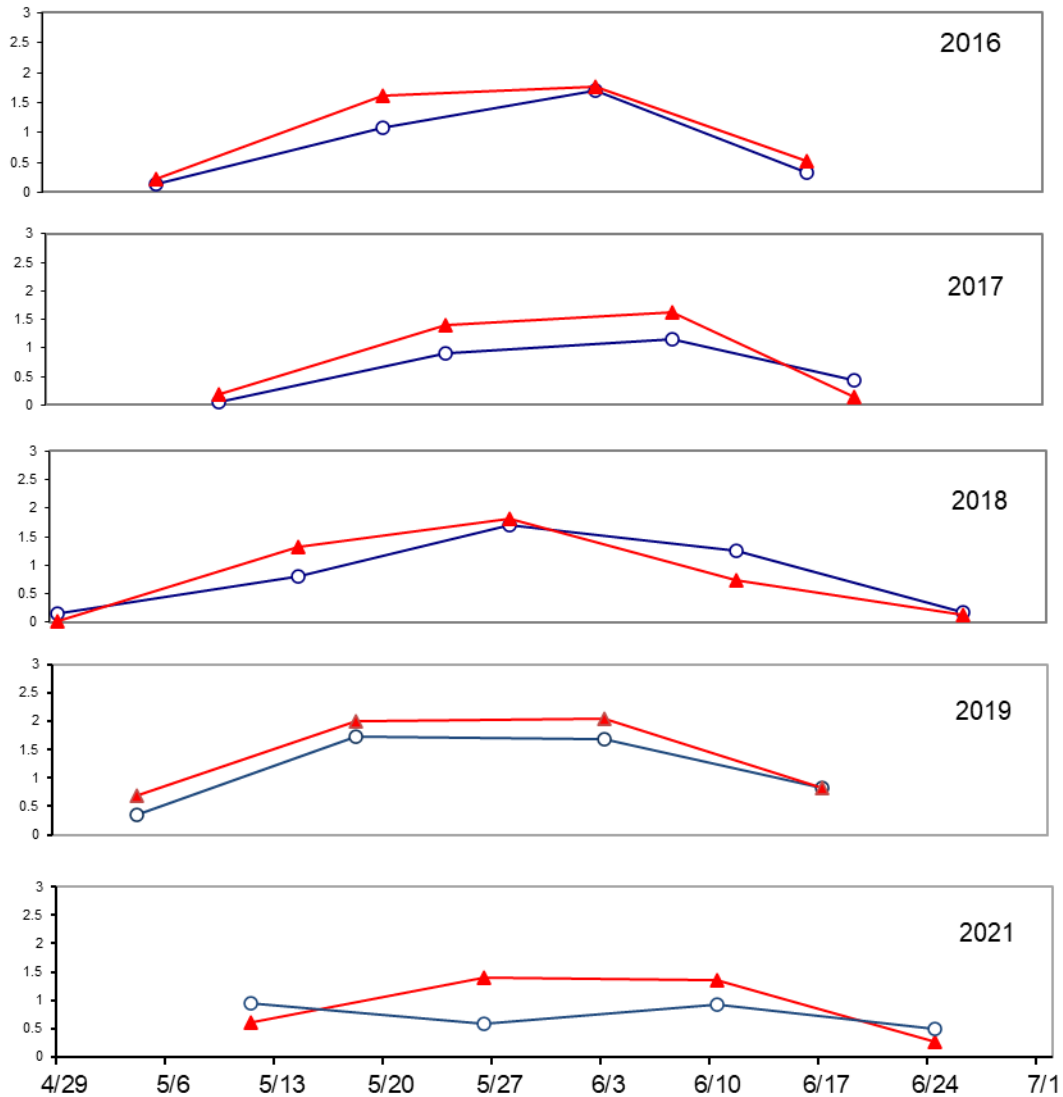


Figure 1. Temporal distribution of female Horseshoe Crab spawning activity in the Delaware Bay by state for the years 2016 - 2021. Lunar periods are defined as a 5 day period (sampled day of lunar event and 2 days before and 2 days after) around the new or full moons in May and June. The red line represents New Jersey; the blue line represents Delaware.

Table 2. Summary statistics reflecting the timing of female Horseshoe Crab spawning in Delaware and New Jersey and average May water temperatures. Water temperatures were recorded at the National Ocean Service station at Lewes, DE (Station Identification Number 8557380). \* Partial survey due to COVID pandemic

	Delaware		New Jersey		Average daily water temp. in May (C)
	Dates of Peak Female Spaw ning	% of Female Spaw ning in May	Dates of Peak Female Spaw ning	% of Female Spaw ning in May	
1999	28 May - 1 June	57	28 May - 1 June	80	16.2
2000	16 May - 18 May	62	16 May - 18 May	71	15.6
2001	3 June - 7 June	39	5 May - 9 May	76	16.0
2002	24 May - 28 May	72	24 May - 28 May	81	16.7
2003	29 May - 2 June	28	29 May - 2 June	44	13.4
2004	17 May - 21 May	80	17 May - 21 May	85	15.7
2005	4 June - 8 June	19	4 June - 8 June	28	13.7
2006	25 May - 29 May	77	25 May - 29 May	85	16.3
2007	30 May - 3 June	66	30 May - 3 June	66	15.4
2008	1 June - 5 June	45	1 June - 5 June	30	15.2
2009	22 May - 26 May	63	22 May - 26 May	74	15.5
2010	12 May - 16 May	80	25 May - 29 May	87	15.6
2011	30 May - 3 June	51	30 May - 3 June	45	16.0
2012	2 June - 6 June	58	18 May - 22 May	91	17.8
2013	23 May - 27 May	71	7 May - 11 May	62	15.3
2014	26 May - 30 May	58	26 May - 30 May	72	15.2
2015	16 May - 20 May	82	16 May - 20 May	78	16.0
2016	2 June - 6 June	36	2 June - 6 June	44	14.7
2017	7 June - 11 June	36	7 June - 11 June	41	n/a
2018	27 May - 31 May	56	27 May - 31 May	74	16.5
2019	16 May - 20 May	49	1 June - 5 June	46	16.0
2020*	3 June - 7 June	28	20 May - 24 May	24	14.0
2021	9 May - 13 May	49	24 May - 28 May	54	15.9

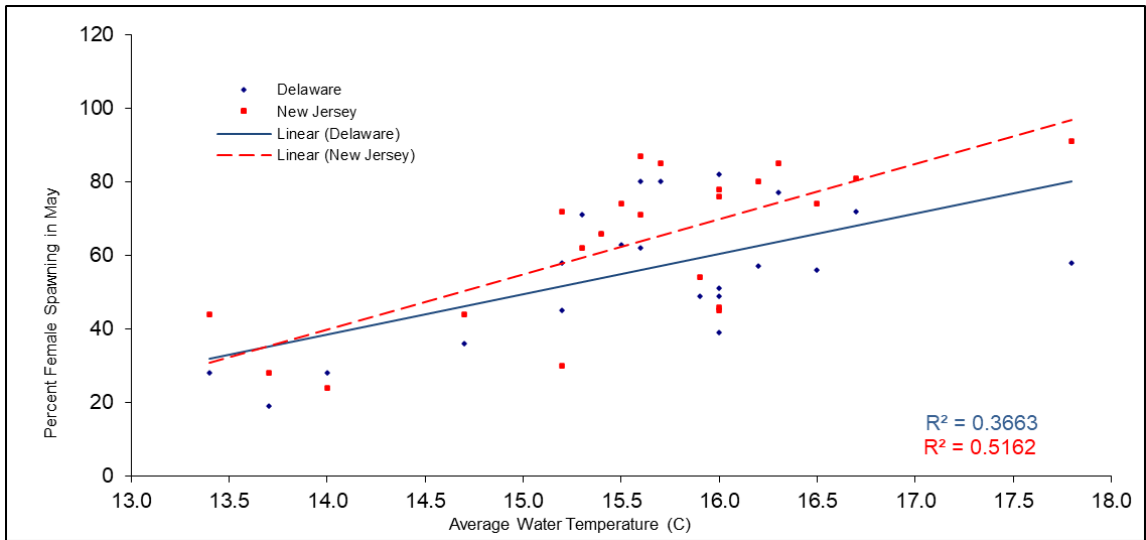


Figure 2. Percent of female Horseshoe Crab spawning occurring in May by state versus May average daily water temperatures. Water temperatures were recorded by the National Ocean Service at Lewes, DE Station ID 8557380.

Table 3. Baywide Horseshoe Crab spawning activity, expressed as the mean number of spawning female crabs per m<sup>2</sup>, by lunar period for the years 1999 to 2021. \*denotes partial survey

Year	0	1	2	3	4	5
1999		0.86	1.58	0.32	0.15	
2000		0.92	1.23	0.91	0.62	
2001		0.77	0.96	0.76	0.42	
2002		0.92	1.81	0.71	0.14	
2003		0.04	0.17	1.51	1.13	0.46
2004		0.56	1.91	0.30	0.30	
2005		0.12	0.67	2.00	0.36	
2006		1.39	1.85	0.61	0.11	
2007		0.17	1.34	1.61	0.38	
2008		0.78	0.17	1.49	0.22	
2009		0.67	1.84	0.96	0.48	
2010		1.26	1.52	0.42	0.06	
2011		0.46	0.92	1.00	0.21	
2012	0.18*	0.71	1.02	0.43	0.14	
2013		0.83	1.26	0.65	0.48	
2014		0.51	0.93	0.69	0.17	
2015		0.35	1.50	0.31	0.51	
2016		0.18	1.34	1.73	0.43	
2017		0.12	1.15	1.39	0.29	
2018		0.09	1.06	1.76	0.99	0.15
2019		0.52	1.86	1.87	0.83	
2020		0.09	1.06	1.76	0.99	
2021		0.78	0.98	1.14	0.38	

### State-specific Spawning Activity

Index values differ by state (Table 4; Figures 3a&b). The trend from the index of female spawning activity exhibited a slightly positive slope in Delaware and New Jersey although neither was statistically significant (DE Slope = 0.01, SE = 0.01, P = 0.90; NJ Slope = 0.01, SE = 0.01, P = 0.29). Trends in male spawning activity (Table 5; Figure 4a&b) exhibited a significant positive slope in both states (DE Slope = 0.09, SE = 0.04, P = 0.02; NJ Slope = 0.11, SE = 0.03, P = 0.01).

*Table 4. Indices of female Horseshoe Crab spawning activity (IFSA), expressed as the mean number of female crabs per m<sup>2</sup>, by state from 1999 to 2021.*

Year	Delaware			New Jersey		
	IFSA	90% CI	Beaches Surveyed	IFSA	90% CI	Beaches Surveyed
1999	0.93	0.67, 1.29	8	0.61	0.47, 0.80	9
2000	1.02	0.72, 1.45	11	0.80	0.67, 0.96	11
2001	0.82	0.63, 1.08	12	0.64	0.51, 0.80	10
2002	0.76	0.61, 0.94	13	1.09	0.92, 1.30	10
2003	0.81	0.64, 1.03	13	0.83	0.76, 0.91	10
2004	0.76	0.62, 0.93	13	0.78	0.68, 0.89	12
2005	0.65	0.53, 0.80	13	0.99	0.84, 1.16	12
2006	0.81	0.67, 0.98	13	1.17	1.03, 1.33	11
2007	0.96	0.79, 1.15	13	0.82	0.68, 0.99	11
2008	0.78	0.63, 0.96	13	0.57	0.49, 0.67	12
2009	0.73	0.60, 0.90	13	1.26	1.11, 1.42	13
2010	0.79	0.64, 0.99	13	0.81	0.68, 0.96	12
2011	0.71	0.59, 0.85	13	0.56	0.48, 0.65	12
2012	0.45	0.33, 0.62	13	0.68	0.55, 0.83	12
2013	0.96	0.87, 1.06	13	0.67	0.61, 0.73	12
2014	0.53	0.47, 0.60	13	0.57	0.52, 0.62	12
2015	0.63	0.57, 0.69	11	0.71	0.66, 0.75	12
2016	0.81	0.74, 0.89	13	1.05	0.99, 1.12	12
2017	0.64	0.58, 0.70	13	0.84	0.73, 0.97	12
2018	0.72	0.62, 0.85	13	0.77	0.69, 0.85	12
2019	1.07	0.99, 1.16	13	1.24	0.97, 1.59	11
2020						
2021	0.73	0.63, 0.85	12	0.91	0.84, 0.98	10



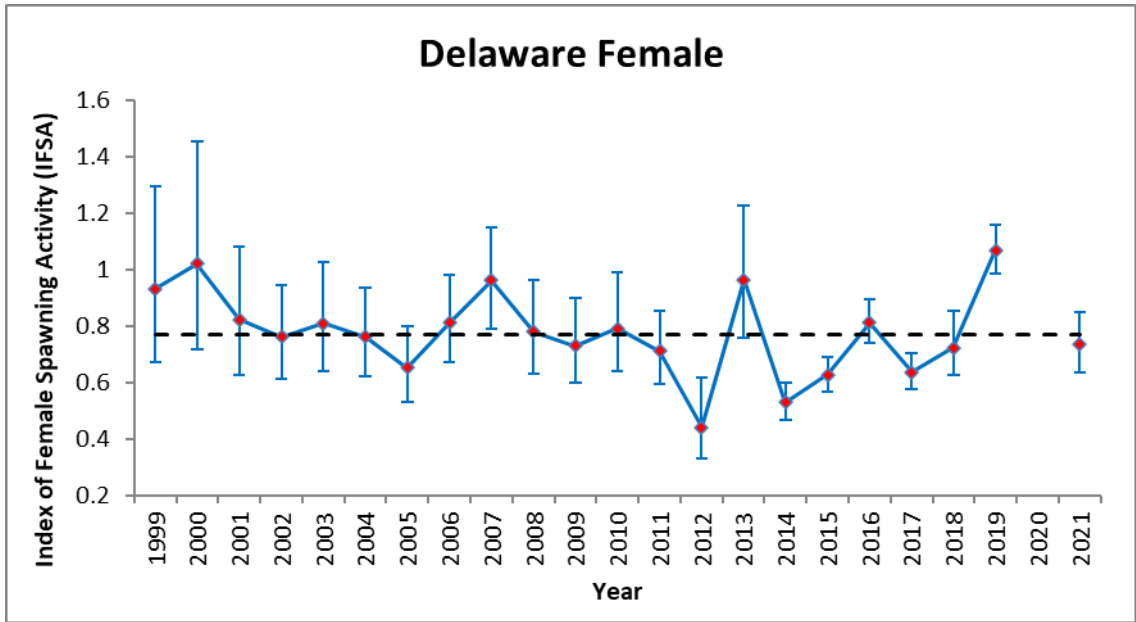


Figure 3a. Index of female Horseshoe Crab spawning activity (IFSA), expressed as the mean number of female crabs per  $m^2$ , for the state of Delaware for the years 1999-2021. Error bars are 90% confidence intervals. The dashed line is the mean value for the time series.

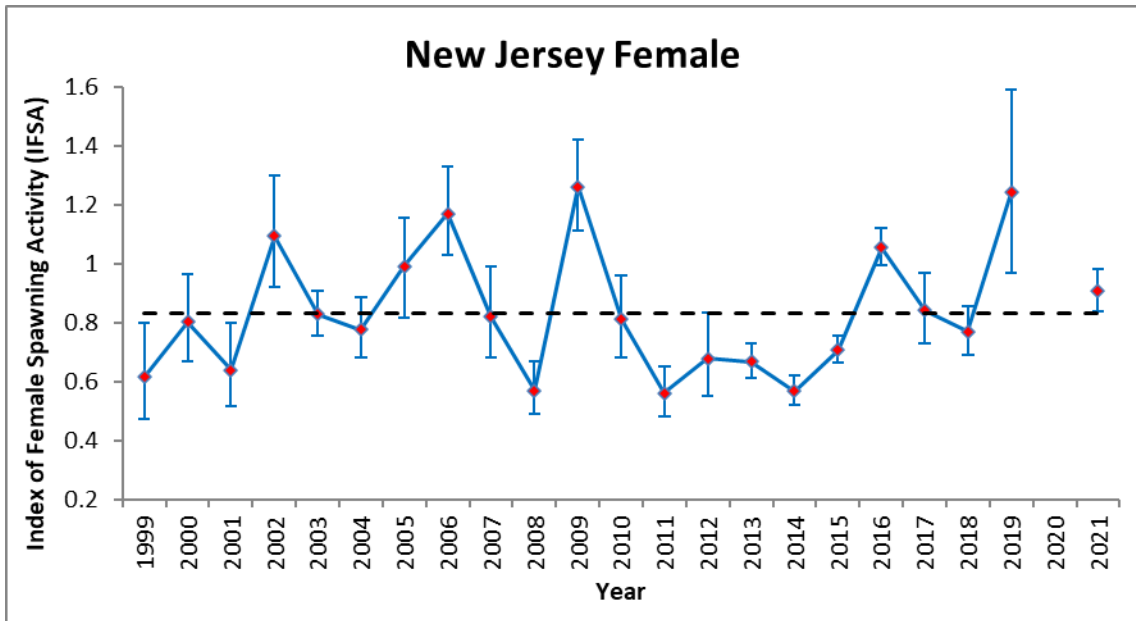


Figure 3b. Index of female Horseshoe Crab spawning activity (IFSA), expressed as the mean number of female crabs per  $m^2$ , for the state of New Jersey for the years 1999-2021. Error bars are 90% confidence intervals. The dashed line is the mean value for the time series.

Table 5. Indices of male Horseshoe Crab spawning activity (IMSA), expressed as the mean number of male crabs per m<sup>2</sup> per night, by state from 1999 to 2021.

Year	Delaware			New Jersey		
	IMSA	90% CI	Beaches Surveyed	IMSA	90% CI	Beaches Surveyed
1999	3.78	2.65, 5.37	8	1.82	1.24, 2.65	9
2000	3.93	2.76, 5.60	11	2.00	1.55, 2.59	11
2001	2.76	2.02, 3.76	12	2.01	1.50, 2.69	10
2002	2.74	2.13, 3.52	13	3.43	2.91, 4.06	10
2003	2.90	2.23, 3.77	13	2.98	2.67, 3.33	10
2004	2.85	2.27, 3.59	13	3.07	2.64, 3.57	12
2005	2.49	1.99, 3.11	13	4.00	3.30, 4.85	12
2006	3.80	3.03, 4.75	13	4.45	3.84, 5.15	11
2007	4.64	3.81, 5.66	13	4.00	3.22, 4.97	11
2008	4.03	3.16, 5.14	13	2.23	1.86, 2.69	12
2009	3.87	3.08, 4.87	13	5.46	4.74, 6.30	13
2010	3.48	2.77, 4.38	13	3.31	2.75, 3.99	12
2011	4.36	3.49, 5.45	13	2.24	1.93, 2.61	12
2012	2.10	1.48, 3.01	13	2.77	2.15, 3.57	12
2013	3.52	3.19, 3.88	13	2.64	2.35, 2.95	12
2014	2.40	2.11, 2.74	13	2.09	1.90, 2.31	12
2015	2.32	2.09, 2.56	11	3.35	3.12, 3.59	12
2016	3.80	3.45, 4.19	13	4.62	4.28, 4.98	12
2017	3.55	3.23, 3.91	13	3.90	3.38, 4.50	12
2018	4.22	3.64, 4.90	13	3.95	3.53, 4.43	12
2019	6.42	5.98, 6.88	13	5.92	4.67, 7.50	11
2020						10
2021	3.81	3.28, 4.43	13	4.66	3.28, 4.43	13

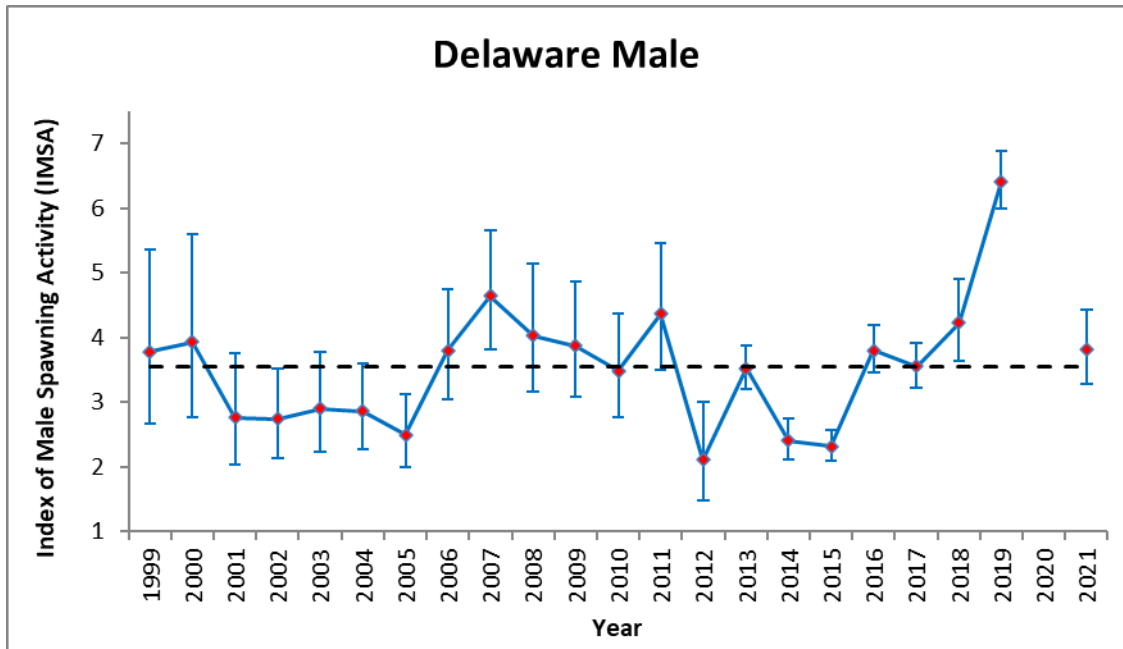


Figure 4a. Index of male Horseshoe Crab spawning activity (IMSA), expressed as the mean number of male crabs per  $m^2$ , for the state of Delaware for the years 1999-2021. Error bars are 90% confidence intervals. The dashed line is the mean value for the time series.

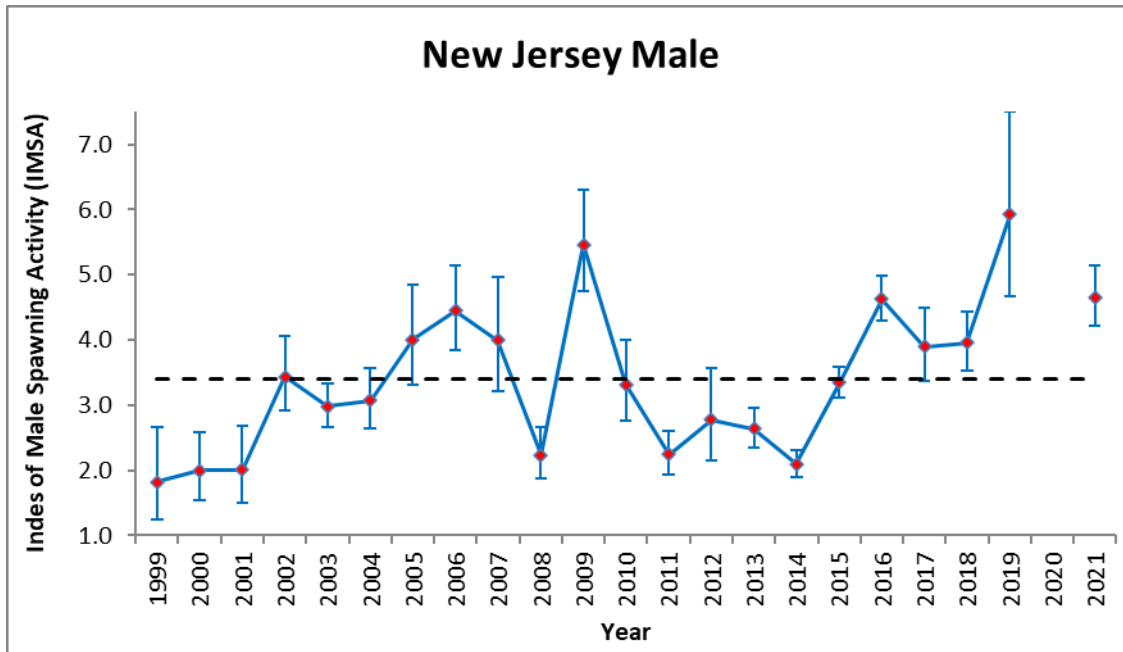


Figure 4b. Index of male Horseshoe Crab spawning activity (IMSA), expressed as the mean number of male crabs per  $m^2$ , for the state of New Jersey for the years 1999-2021. Error bars are 90% confidence intervals. The dashed line is the mean value for the time series.

## Baywide Spawning Activity - Females

Trends in state-specific female spawning activity were compensatory, as no change in baywide spawning activity was detected (Figure 5; Table 6). The regression slope was close to zero (Slope = 0.004, SE = 0.01, 90% CI = -0.01 to 0.01, P = 0.47). Coefficients of variation were below 14% over the entire survey period and at or below 10% since 2002. Female spawning activity by beach for all years is provided in Appendix II. Smith and Robinson (2015) used mixed-model trend regression to evaluate beach level trends in spawning density. Their results indicated that, while concentrations at primary spawning beaches tend to be stabilizing, higher numbers of spawning females have become more numerous among ancillary Delaware Bay beaches.

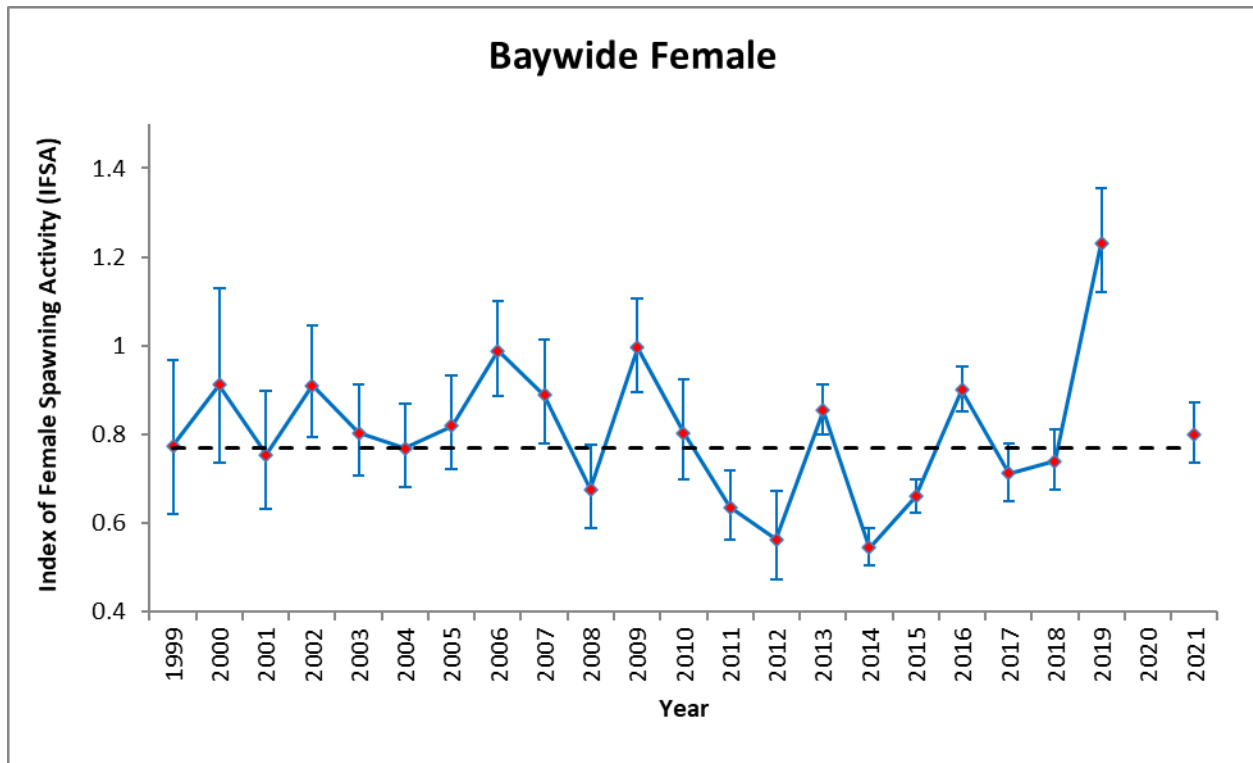


Figure 5. Index of female Horseshoe Crab spawning activity (IFSA) for the Delaware Bay from 1999 to 2021. Error bars are 90% confidence intervals. The dashed line is the mean value for the time series. The dashed line represents the mean IMSA for the time series.

## Survey Sex Ratios

Current Horseshoe Crab harvest management strategies in the Delaware Bay area favor the harvest of male crabs. Concern was expressed that these strategies may cause spawning sex ratios (M:F) to drop and negatively affect spawning and egg fertilization. Annual sex ratios have ranged from 3.1:1 to 5.6:1 over the course of the survey. M:F ratio in 2021 (5.2:1) was above the time series average (4.3:1) (Table 6).

*Table 6. Indices of bay- wide male and female Horseshoe Crab spawning activity (ISA), number of beaches surveyed, standard deviation (SD), coefficient of variations (CV), 90% confidence intervals (CI) and sex ratio for the Delaware Bay from 1999 to 2021.*

Year	Beaches Surveyed	Male				Female				Annual Sex Ratio (M:F)
		ISA	90% CI	SD	CV (%)	ISA	90% CI	SD	CV (%)	
1999	17	<b>2.50</b>	1.86, 3.37	0.45	18	<b>0.77</b>	0.62, 0.97	0.10	13	3.2
2000	22	<b>2.96</b>	2.31, 3.80	0.45	15	<b>0.91</b>	0.74, 1.13	0.12	13	3.2
2001	22	<b>2.37</b>	1.91, 2.95	0.31	13	<b>0.75</b>	0.63, 0.90	0.08	10	3.1
2002	23	<b>2.86</b>	2.45, 3.34	0.27	9	<b>0.91</b>	0.79, 1.04	0.07	8	3.1
2003	23	<b>2.89</b>	2.50, 3.33	0.25	9	<b>0.80</b>	0.71, 0.91	0.06	8	3.6
2004	24	<b>2.93</b>	2.55, 3.36	0.24	8	<b>0.77</b>	0.68, 0.87	0.06	7	3.8
2005	23	<b>3.23</b>	2.79, 3.74	0.29	9	<b>0.82</b>	0.72, 0.93	0.07	9	3.9
2006	24	<b>3.99</b>	3.49, 4.56	0.33	8	<b>0.99</b>	0.89, 1.10	0.07	7	4.0
2007	24	<b>4.22</b>	3.63, 4.90	0.38	9	<b>0.89</b>	0.78, 1.01	0.07	8	4.7
2008	25	<b>2.30</b>	1.83, 2.90	0.32	14	<b>0.68</b>	0.59, 0.78	0.06	9	3.4
2009	26	<b>4.67</b>	4.11, 5.29	0.36	8	<b>1.00</b>	0.89, 1.11	0.06	6	4.7
2010	25	<b>3.39</b>	2.93, 3.94	0.31	9	<b>0.80</b>	0.70, 0.92	0.07	8	4.2
2011	25	<b>3.31</b>	2.83, 3.87	0.31	10	<b>0.64</b>	0.57, 0.72	0.05	7	5.2
2012	25	<b>2.44</b>	1.97, 3.01	0.31	13	<b>0.56</b>	0.47, 0.67	0.06	10	4.4
2013	25	<b>3.20</b>	2.98, 3.44	0.14	4	<b>0.85</b>	0.80, 0.91	0.03	4	3.8
2014	25	<b>2.28</b>	2.09, 2.48	0.12	5	<b>0.54</b>	0.50, 0.59	0.03	5	4.2
2015	23	<b>2.75</b>	2.59, 2.92	0.10	4	<b>0.66</b>	0.62, 0.70	0.02	4	4.2
2016	25	<b>4.10</b>	3.86, 4.36	0.20	4	<b>0.90</b>	0.85, 0.95	0.03	3	4.6
2017	25	<b>3.68</b>	3.37, 4.02	0.20	5	<b>0.71</b>	0.65, 0.78	0.04	6	5.2
2018	25	<b>4.12</b>	3.74, 4.53	0.24	6	<b>0.74</b>	0.68, 0.81	0.04	6	5.6
2019	24	<b>6.75</b>	6.23, 7.32	0.33	5	<b>1.23</b>	1.12, 1.36	0.07	6	5.5
2020	7	<b>7.35</b>	*	*	*	<b>1.34</b>	*	*	*	5.5
2021	22	<b>4.13</b>	3.78, 4.53	0.22	6	<b>0.80</b>	0.74, 0.87	0.04	5	5.2

## Baywide Spawning Activity - Males

Sex-specific harvest requirements contained in Addendum IV to the Interstate Fishery Management Plan for Horseshoe Crab (ASMFC 2006) for Delaware and New Jersey (specifically a male-only harvest) prompted an examination of bay-wide male spawning abundance. Male spawning activity increased significantly (Slope = 0.11, SE = 0.03, 90% CI = 0.05 to 0.16, P = 0.01) from 1999 to 2021 (Figure 6; Table 6). Coefficients of variation for the male component of the survey were below 20% for the entire sampling period and below 10% since 2013.

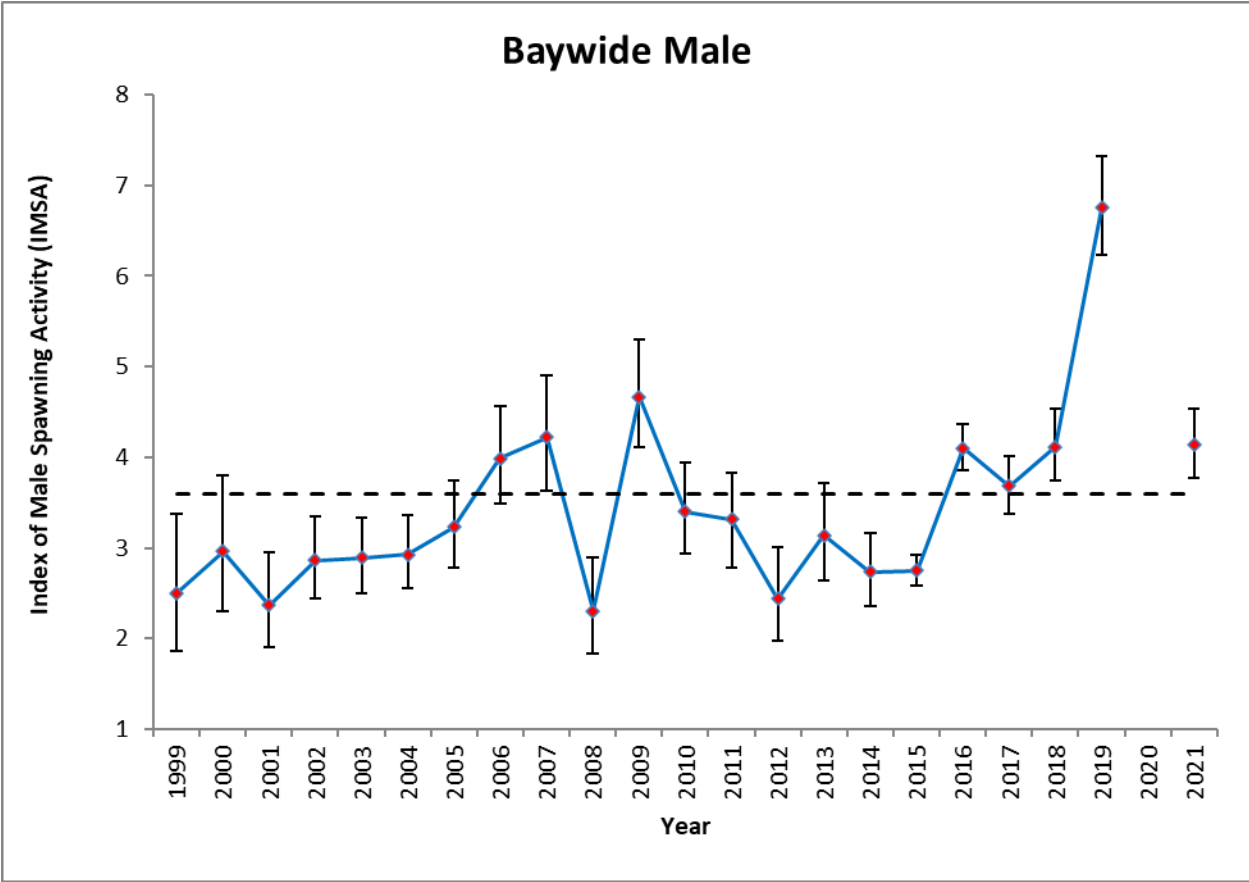


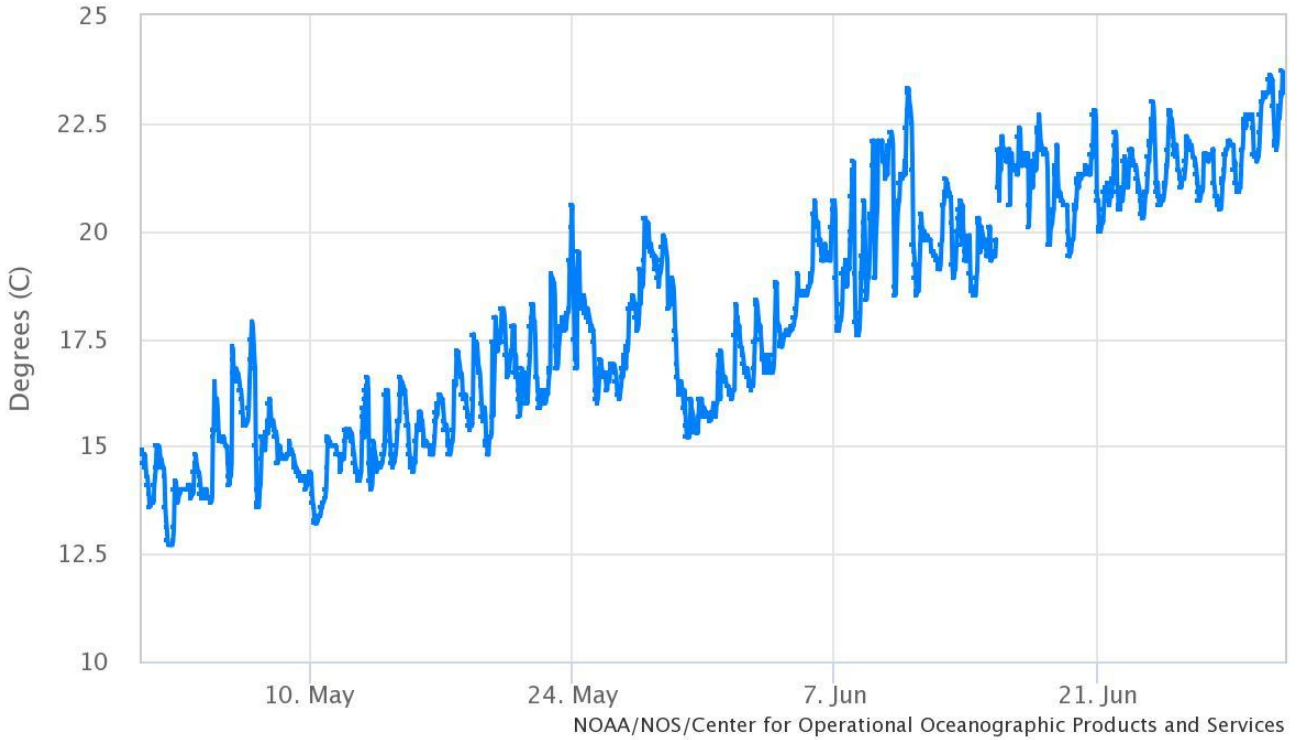
Figure 6. Index of male Horseshoe Crab spawning activity (IMSA) for the Delaware Bay from 1999 to 2021. Error bars are 90% confidence intervals. The dashed line represents the mean IMSA for the time series.

## Literature Cited

- Atlantic States Marine Fisheries Commission (ASMFC). 1998. Interstate fishery management plan for Horseshoe Crab. Fishery Management Report No. 32, Atlantic States Marine Fisheries Commission, Washington D.C.
- Atlantic States Marine Fisheries Commission (ASMFC). 2006. Addendum IV to the Interstate Fishery Management Plan for Horseshoe Crab. Fishery Management Report No. 32d, Atlantic States Marine Fisheries Commission, Washington D.C.
- Carmichael, R.H., D. Rutecki and I. Valiela. 2003. Abundance and population structure of the Atlantic Horseshoe Crab *Limulus polyphemus* in Pleasant Bay, Cape Cod. *Marine Ecol. Prog. Ser.* 246:225-239.
- Finn, J.J., C.N. Shuster, Jr. and B.L. Swan. 1991. *Limulus* spawning activity on Delaware Bay shores 1990. Finn-Tech Inc., Cape May Courthouse, NJ.
- Maio, K.J. 1998. Quantitative description of the temporal and spatial patterns in spawning activity of the Horseshoe Crab, *Limulus polyphemus*. Master's thesis. University of Maryland Eastern Shore, Princess Anne, Maryland.
- McGowan, C. P., J. E. Hines, J. D. Nichols, J. E. Lyons, D. R. Smith, K. S. Kalasz, L. J. Niles, A. D. Dey, N. A. Clark, P. W. Atkinson, C. D. T. Minton, and W. Kendall. 2011. Demographic consequences of migratory stopover: linking red knot survival to Horseshoe Crab spawning abundance. *Ecosphere* 2(6):art69.
- Smith, D.R., P.S. Pooler, B.L. Swan, S.F. Michels, W.R. Hall, P.J. Himchak, and M.J. Millard. 2002. Spatial and temporal distribution of Horseshoe Crab (*Limulus polyphemus*) spawning in Delaware Bay: implications for monitoring. *Estuaries* 25(1):115-125.
- Smith D.R. and S. Bennett. 2005. Horseshoe Crab spawning activity in Delaware Bay: 1999 – 2004. Report to the ASMFC Horseshoe Crab Management Board. Unpublished.
- Smith, D.R., and S.F. Michels. 2006. Seeing the elephant: importance of spatial and temporal coverage in a large-scale volunteer-based program to monitor Horseshoe Crabs. *Fisheries* 31(10):485-491.
- Smith, D.R., and T.J. Robinson. 2015. Delaware Bay Horseshoe Crab spawning activity after harvest reduction based on mixed-model analyses. *Estuaries and Coasts* [online serial] DOI 10.1007/s12237-015-9961-3.
- Zimmerman, J., S. Michels, D. Smith, and S. Bennett. 2012. Horseshoe Crab spawning activity In Delaware Bay: 1999 – 2012. Unpublished report to the ASMFC Horseshoe Crab Technical Committee.

APPENDIX I. Water temperature data from Lewes, DE (Station Identification Number 8557380; Latitude 38° 46.9' N / Longitude 75° 7.2' W) for the 2021. Source: Center for Operational Oceanographic Products and Services (CO-OPS).

**NOAA/NOS/CO-OPS**  
**Water Temperature at 8557380, Lewes DE**  
**From 2021/05/01 00:00 GMT to 2021/06/30 23:59 GMT**





APPENDIX II. Index of female spawning Horseshoe Crab abundance, expressed as the mean number of female crabs per m<sup>2</sup> per night, for Delaware Bay beaches surveyed from 1999 to 2021.

State	Beach	1999	2000	2001	2002	2003	2004	2005	2006	2007	2008	2009	2010	2011	2012	2013	2014	2015	2016	2017	2018	2019	2020	2021
DE	Bennetts Pier		0.22	0.64	0.47	0.28	0.55	0.70	0.61	0.55	0.37	0.64	0.22	0.28	0.32	0.13	0.15	0.36	0.24	0.05	0.16	1.04	0.26	0.43
DE	Big Stone	0.75	0.73	0.86	0.63	0.64	0.76	0.81	1.09	1.35	0.71	0.79	0.67	0.86	0.54	0.54	0.61	0.69	0.93	0.38	0.88	0.91	0.65	0.27
DE	Broadkill	0.32	0.06	0.12	0.13	0.21	0.17	0.19	0.12	0.18	0.55	0.23	0.49	0.57	0.22	0.57	0.62		0.25	0.35	0.74	0.78		0.26
DE	Cape Henlopen				0.09	0.18	0.13	0.27	0.10	0.06	0.30	0.26	0.32	0.42	0.30	0.42	0.43	0.27	0.37	0.34	0.24	0.53		0.17
DE	Fowlers	0.78	0.49	0.70	0.24	0.45	0.61	0.21	0.41	0.50	0.53	0.21	0.42	0.13	0.06	0.31	0.17		0.21	0.37	0.67	0.81		0.07
DE	Kitts Hummock	2.15	2.58	2.35	1.47	1.55	1.24	1.42	1.72	1.44	1.23	1.48	1.30	1.27	0.85	1.91	1.06	1.22	1.79	1.30	0.88	1.55		1.22
DE	North Bowers	0.88	1.18	1.04	1.21	0.98	0.50	0.60	0.75	1.11	0.36	0.69	0.75	0.49	0.43	1.08	0.29	0.45	0.95	0.60	0.73	0.96		0.55
DE	Pickering		3.30	1.62	1.70	1.64	1.64	1.47	1.49	1.64	1.99	1.67	1.87	1.14	1.42	2.55	0.99	1.51	2.75	1.64	1.60	2.54	2.08	1.80
DE	Prime Hook	0.60	0.19	0.44	0.59	0.47	0.76	0.65	0.73	1.11	0.92	0.61	0.92	1.03	0.26	1.12	0.71	1.04	0.44	0.54	0.75	1.26		0.56
DE	Slaughter	1.62	1.33	1.10	0.73	1.65	1.52	0.68	1.04	1.24	1.10	0.72	0.75	1.14	0.47	1.47	0.65	0.93	0.56	0.97	1.33	2.02		2.03
DE	South Bowers		0.92	0.84	1.13	0.47	0.48	0.63	0.72	1.30	0.57	1.02	0.50	0.58	0.54	0.66	0.78	0.81	0.96	0.68	0.89	1.09	1.01	0.63
DE	Ted Harvey				1.44	1.99	1.52	0.82	1.46	1.93	1.47	1.19	1.34	1.35	1.23	2.13	1.15	1.47	1.62	1.15	1.20	1.87	2.51	1.11
DE	Woodland	0.14	0.10	0.03	0.08	0.01	0.00	0.01	0.27	0.03	0.00	0.02	0.16	0.01	0.08	0.01	0.01	0.00	0.08	0.03	0.00	0.00		
NJ	Fortescue	0.25				0.42	0.54	0.58	0.65	0.16	0.33	0.44	0.34	0.34	0.73	0.93	0.43	0.69	0.68	0.84	0.61	0.70		
NJ	Gandys	0.40	0.39	0.45	1.41	0.55	0.82	0.88	1.17	0.83	0.30	1.31	1.24	0.25	1.50	1.08	0.54	1.17	0.94	0.47	0.79			
NJ	Higbees		0.04					0.14			0.03	0.14		0.42	0.06	0.07	0.23	0.09	0.28	0.11	0.42	0.51		0.23
NJ	Higs Beach	0.79	0.96	0.80	0.47	0.53	0.70	0.76	0.69	0.75	0.46	0.73	0.56	0.61	0.68	0.71	0.73	0.86	1.76	0.91	0.97	2.13	1.29	0.66
NJ	Kimbles	0.71	0.85	0.48	0.50	0.50	0.41					0.82	0.51	0.33	0.93	0.49	0.47	0.94	0.83	0.76	0.40	1.67		0.69
NJ	Norburys			0.46	0.62	0.54	0.67	0.94	0.69	0.43	0.41	1.14	0.68	0.71	0.78	0.76	0.83	1.25	1.79					
NJ	North Cape May	0.23	0.05	0.09	0.08	0.12	0.02	0.12	0.02	0.04	0.03	0.08	0.02	0.24	0.03	0.06	0.16	0.23	0.46	0.19	0.19	0.21		0.09
NJ	Pierces Point		0.61		0.67	0.73	0.96	0.83	0.74	0.94	0.71	1.27	1.11	0.96	1.13	1.19	1.07	1.64	1.53	1.95	0.98	4.83		2.39
NJ	Reeds	0.38	0.65	0.40	0.88	0.82	0.42	0.24	0.97	0.31	0.34	1.07	0.57	0.82	0.86	0.95	0.80	0.79	0.97	0.83	0.70	2.34		1.50
NJ	Sea Breeze	0.09	0.11	0.30	1.63	0.39	0.43	0.21	0.85	0.93	0.67	0.77	1.02											
NJ	Cape Shore Lab	1.25	1.33	1.28	0.69	0.63	0.90	1.17	0.82	1.26	0.39	1.11	0.79	0.80	1.19	0.80	0.57	0.94	2.22	1.67	1.80	1.10		0.92
NJ	Sunset			0.11					0.01	0.00	0.01	0.16												
NJ	Townbank			0.74	0.40	0.46	0.20			0.29			0.31	0.39	0.24	0.52	0.60	0.37	0.71	0.36	0.50	0.24		0.38
NJ	Villas							0.71	0.48		0.34	0.64	0.41	0.53	0.24	0.35	0.71	0.63	1.13	1.11	0.84	1.36		0.73