

Horseshoe Crab Spawning Activity in Delaware Bay: 1999 – 2010

Report to the Atlantic States Marine Fisheries Commission's Horseshoe Crab Technical Committee

Stewart Michels, Delaware Division of Fish and Wildlife,
89 Kings Highway, Dover, DE 19901
(302) 739-4782 / stewart.michels@state.de.us

David Smith, USGS – Leetown Science Center,
11649 Leetown Road, Kearneysville, WV 25443
(304) 724-4467 / drsmith@usgs.gov

Sherry Bennett, New Jersey Division of Fish, Game and Wildlife,
PO Box 418, Port Republic, NJ 08241

May 30, 2011

Summary

- This marks the twelfth year that the Delaware Bay Horseshoe Crab Spawning Survey has been implemented in a standardized manner throughout May and June in the Delaware Bay.
- The survey is completed annually through the assistance and dedication of numerous volunteers and coordinators.
- Annual coefficients of variation for estimates of female spawning activity were below 14% for the entire series and remained below 10% for the last nine years. Annual coefficients of variation for estimates of male spawning activity were below 20% for the entire series.
- Female spawning activity in 2010 peaked during the second lunar period sampled (May 25 - 29).
- Most female spawning activity in 2010 was observed in May (82% in DE and 88% in NJ).
- Percent of female spawning that occurred in May was associated with water temperature (correlations were 0.70 and 0.64 for DE and NJ, respectively).
- Baywide female spawning activity over the past 12 years remained stable (Slope = 0.00, SE = 0.01, 90% CI = -0.01 to 0.02, P = 0.68).
- No significant trends in state-specific female spawning were detected; though, the slope in Delaware was negative and the slope in New Jersey was positive.
- Baywide male spawning activity showed a significantly positive trend from 1999 through 2010 (Slope = 0.12, SE = 0.05, 90% CI = 0.03 to 0.22, P = 0.04).
- Sex ratios (M:F) ranged from 3.1 to 4.7 and have increasingly favored males in recent years.

Introduction

The Atlantic States Marine Fisheries Commission's (ASMFC) Interstate Fishery Management Plan for Horseshoe Crab (ASMFC 1998) required that the states of Delaware, Maryland and New Jersey implement pilot horseshoe crab spawning surveys based on "standardized and statistically robust methodologies". In January 1999, the ASMFC convened a workshop that established a framework for such surveys in the Mid-Atlantic region. The framework built upon existing horseshoe crab spawning survey efforts by Finn et al. (1991) and Maio (1998). Using funds from the U.S. Geological Survey's (USGS) State Partnership Program, a comprehensive pilot study was designed and implemented in Delaware Bay during the spring of 1999 (Smith et al. 2002). The U.S. Fish and Wildlife Service provided further funding in 2000 to continue the survey in its present form, and the Delaware Division of Fish and Wildlife (DE DFW) provided funding in subsequent years using Atlantic Coastal Fisheries Cooperative Management Act funds. The survey has been shown to provide levels of spatial and temporal coverage essential for understanding trends in spawning activity (Smith and Michels 2006).

The survey is an excellent example of state, federal, non-governmental organization (NGO), corporate and citizen cooperation. Survey coordination is contracted through Limuli Labs and the University of Delaware. Data entry is completed by staff from the New Jersey Department of Environmental Protection; USGS and DE DFW staff oversee data analysis and report preparation. The vast sampling effort is conducted by a large contingent of dedicated private citizens, state and federal agencies, corporations, and NGO's.

This report is a continuation of a series of statistical reports on the survey and is meant to compliment the ongoing series of reports issued by the survey coordinators, Ms. Benjie Swan and Dr. William Hall in cooperation with Dr. Carl N. Shuster Jr.

Survey Objectives

The Delaware Bay Horseshoe Crab Spawning Survey has several important objectives:

- 1) provide a reliable index of spawning activity to monitor the temporal and spatial distribution of horseshoe crab spawning activity for comparing baywide spawning among years, beach-level spawning within Delaware Bay, and distributions of spawning horseshoe crabs and shorebirds;
- 2) increase our understanding of the relationship between environmental factors (tidal height, wave height, and water temperature) and spawning activity; and
- 3) promote public awareness of the central role of horseshoe crabs in shorebird population dynamics, Atlantic coast fisheries, and human health through the production of *Limulus* amebocyte lysate (LAL).

Data Availability

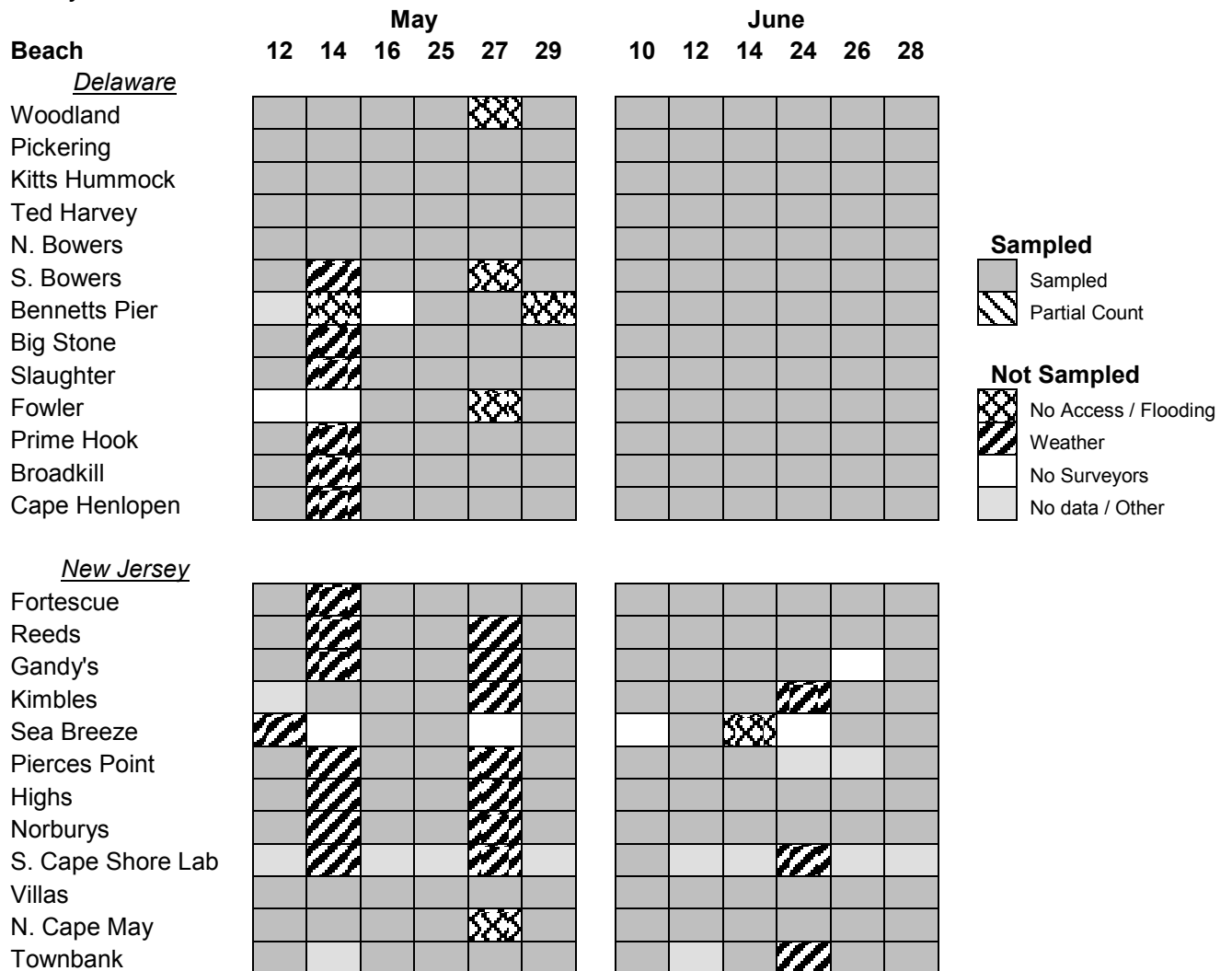
The spawning survey database was converted to MS ACCESS in 2004. A visual basic program was also developed by USGS to calculate estimates of spawning activity in tabular and graphic form. The conversion process revealed a number of errors that were corrected and detailed in Smith and Bennett (2005). The overall patterns of spawning activity were largely unaffected by these corrections. Beginning in 2010, the previous software was no longer

compatible with updated Windows OS, so an R program was used to calculate estimates. Data used in this report (both estimates and raw data) and the software used to calculate estimates are available by request.

Summary Results

Sampling in 2010 was conducted during twelve nighttime high tides from 12 May through 28 June. Twenty-five (25) beaches were sampled in the Delaware Estuary – 13 in Delaware and 12 in New Jersey. The total number of tides sampled over the season was 247, with 53 sampling events missed or canceled (Table 1).

Table 1. Beaches sampled in the 2010 Delaware Bay Horseshoe Crab Spawning Survey.



Temporal Spawning Distribution

Time of spawning is an important factor to examine as it gives an indication of potential food availability to migratory shorebirds. The time of spawning may also affect the survival of egg, larvae and juvenile stages.

State-specific female spawning activity by sampling period was similar to 2006 (Figure 1). Female spawning activity peaked in Delaware in the first lunar period (May 12 – 16); whereas, female spawning activity in New Jersey peaked in the second lunar period (May 25 – 29). Eighty-two percent (82%) of the annual female spawning activity in Delaware and 88% of the annual female spawning activity in New Jersey was observed in May (Table 2). The proportion of annual state-specific spawning activity that occurred in May was higher in New Jersey in every year except 2008.

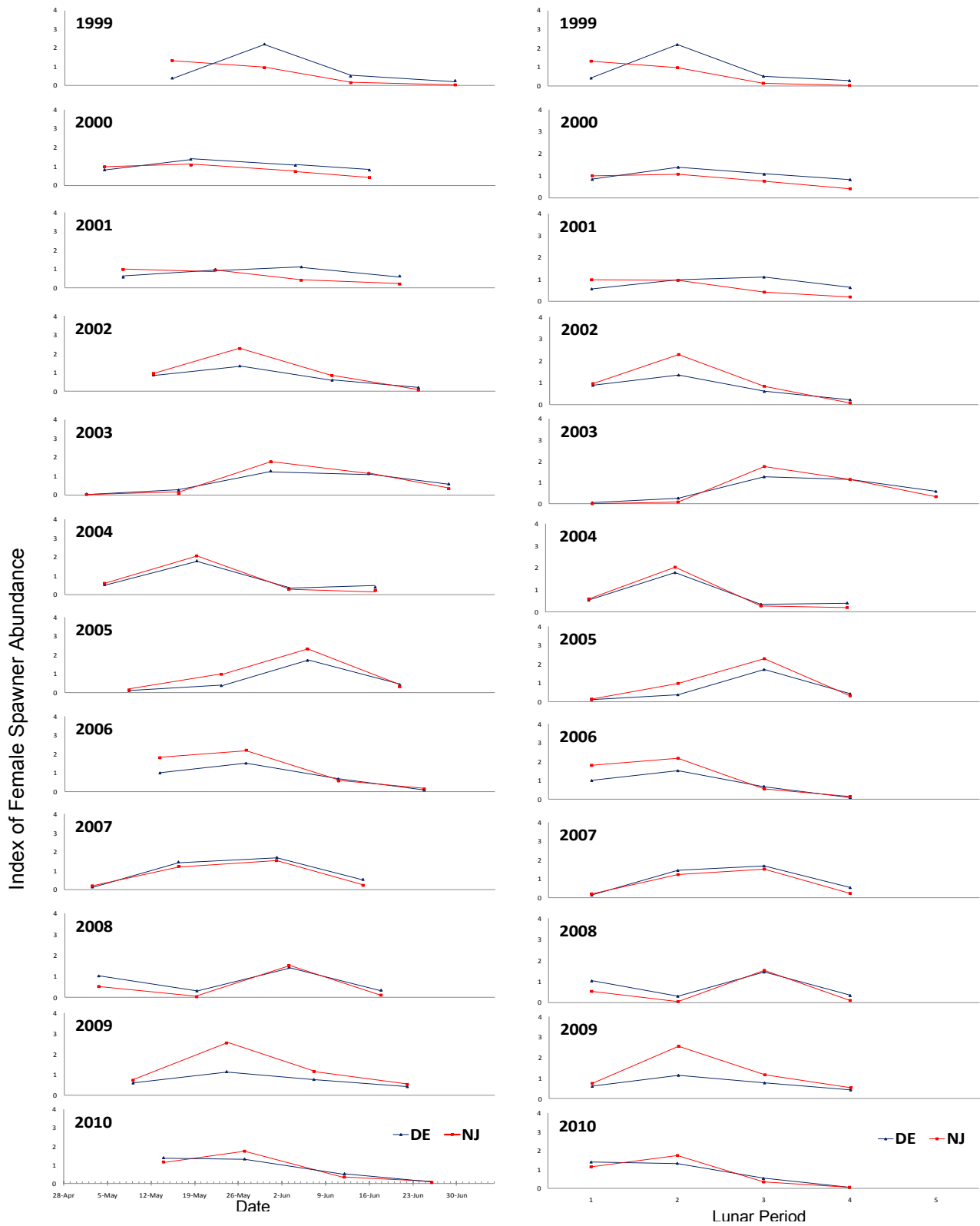


Figure 1. Temporal distribution of female horseshoe crab spawning activity in the Delaware Bay by state. Lunar periods are defined as a 5 day period (sampled day of lunar event and 2 days before and 2 days after) around the new or full moons in May and June.

Water temperature may influence the time of spawning (Smith and Michels 2006). There was a strong association between average May water temperatures recorded at Lewes, DE and the percentage state-specific female spawning activity in May ($r_{DE} = 0.70$, $P_{DE} = 0.01$; $r_{NJ} = 0.64$, $P_{NJ} = 0.03$; Figure 2). Daily average water temperatures recorded at Lewes, DE (Appendix I) suggested spawning was delayed in 2003 and 2005 when water temperatures were not consistently above 15 °C until late May or early June. Reduced spawning activity noted during the second lunar sampling period in 2008 coincided with a severe nor'easter that depressed water temperatures. Water temperatures in 2010 were above 15 °C by the first week in May, but dipped below that level by the first lunar sampling event (May 12). Water temperatures remained consistently above 15 °C by May 22 (prior to the second lunar sampling event).

Table 2. Summary statistics reflecting the timing of female horseshoe crab spawning in Delaware and New Jersey and average May water temperatures. Water temperatures were recorded at the National Ocean Service station at Lewes, DE.

Year	Delaware		New Jersey		Average daily water temp. in May (C)
	Dates of Peak Female Spawning	% of Female Spawning in May	Dates of Peak Female Spawning	% of Female Spawning in May	
1999	28 May - 1 June	77	28 May - 1 June	93	16.2
2000	16 May - 18 May	54	16 May - 18 May	64	15.6
2001	3 June - 7 June	47	5 May - 9 May	76	16.0
2002	24 May - 28 May	73	24 May - 28 May	78	16.7
2003	29 May - 2 June	47	29 May - 2 June	56	13.4
2004	17 May - 21 May	76	17 May - 21 May	85	15.7
2005	4 June - 8 June	18	4 June - 8 June	30	13.7
2006	25 May - 29 May	77	25 May - 29 May	85	16.3
2007	30 May - 3 June	42	30 May - 3 June	45	15.4
2008	1 June - 5 June	43	1 June - 5 June	26	15.2
2009	22 May - 26 May	59	22 May - 26 May	66	15.5
2010	12 May - 16 May	82	25 May - 29 May	88	15.6

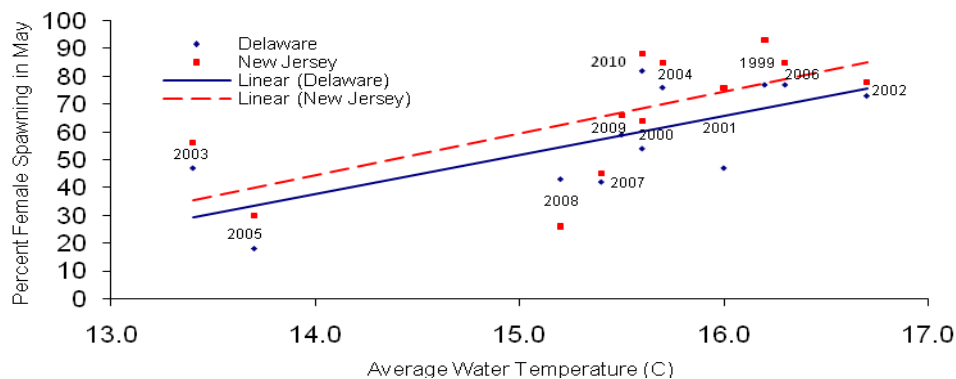


Figure 2. Percent of female horseshoe crab spawning occurring in May by state versus May average daily water temperatures. Water temperatures were recorded by the National Ocean Service at Lewes, DE Station ID 8557380.

State-specific Spawning Activity

Trends in female spawning activity differed by state (Figure 3; Table 3). The index of female spawning activity in Delaware exhibited a slightly negative slope, though not significant (Slope = -0.01, SE = 0.01, P = 0.16). Female spawning activity in New Jersey trended upward, though not significantly (Slope = 0.02, SE = 0.02, P = 0.30).

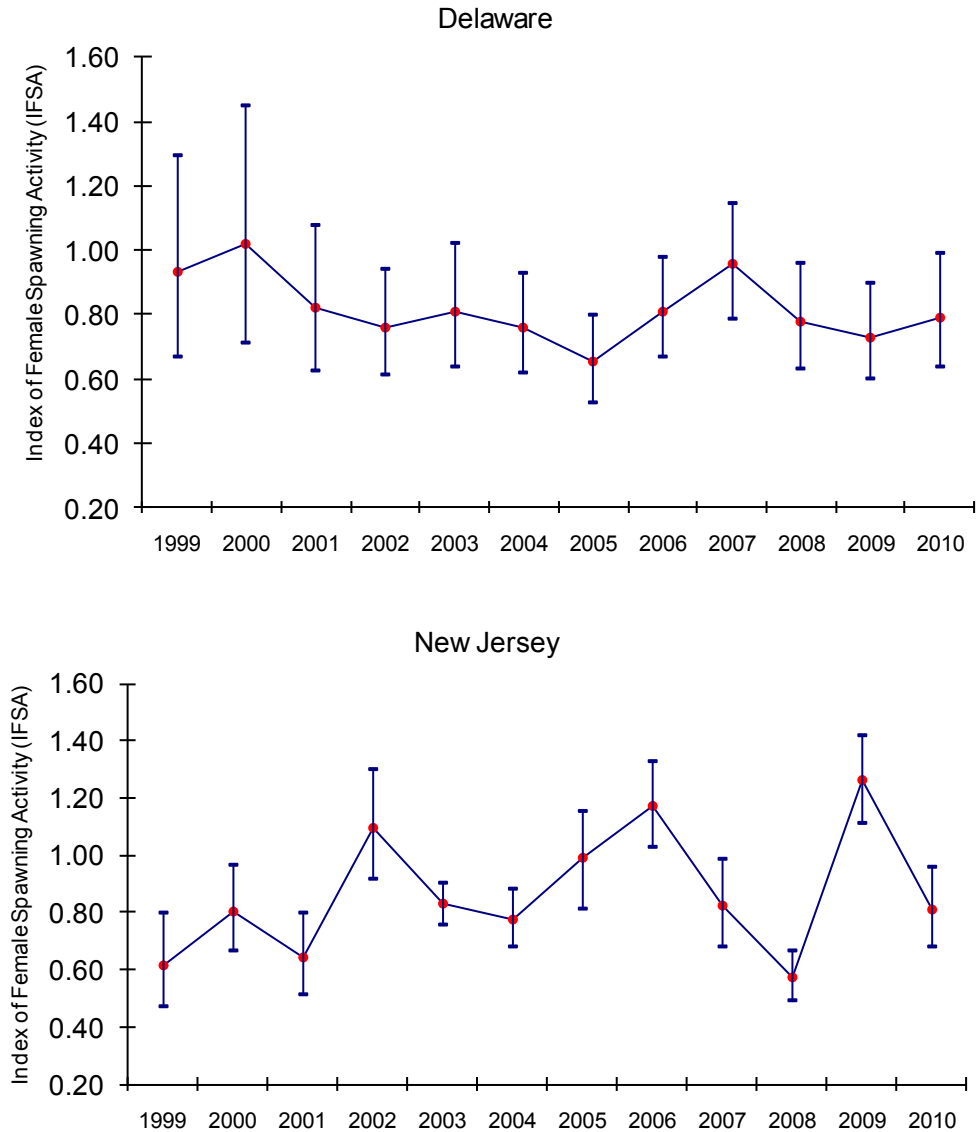


Figure 3. Indices of female horseshoe crab spawning activity (IFSA), expressed as the mean number of female crabs per m^2 per night, for the states of Delaware and New Jersey. Error bars are 90% confidence intervals.

Table 3. Indices of female horseshoe crab spawning activity (IFSA), expressed as the mean number of female crabs per m² per night, by state from 1999 to 2010.

Year	Delaware			New Jersey		
	IFSA	90% CI	Beaches Surveyed	IFSA	90% CI	Beaches Surveyed
1999	0.93	0.67, 1.29	8	0.61	0.47, 0.80	9
2000	1.02	0.72, 1.45	11	0.80	0.67, 0.96	11
2001	0.82	0.63, 1.08	12	0.64	0.51, 0.80	10
2002	0.76	0.61, 0.94	13	1.09	0.92, 1.30	10
2003	0.81	0.64, 1.03	13	0.83	0.76, 0.91	10
2004	0.76	0.62, 0.93	13	0.78	0.68, 0.89	12
2005	0.65	0.53, 0.80	13	0.99	0.84, 1.16	12
2006	0.81	0.67, 0.98	13	1.17	1.03, 1.33	11
2007	0.96	0.79, 1.15	13	0.82	0.68, 0.99	11
2008	0.78	0.63, 0.96	13	0.57	0.49, 0.67	12
2009	0.73	0.60, 0.90	13	1.26	1.11, 1.42	13
2010	0.79	0.64, 0.99	13	0.81	0.68, 0.96	12

Baywide Spawning Activity - Females

Trends in state-specific female spawning activity were compensatory, as no change in baywide spawning activity was detected (Figure 4; Table 4). The regression slope was close to zero (Slope = 0.00, SE = 0.01, 90% CI = -0.01 to 0.02, P = 0.68). Coefficients of variation were below 14% over the entire survey period and below 10% since 2002.

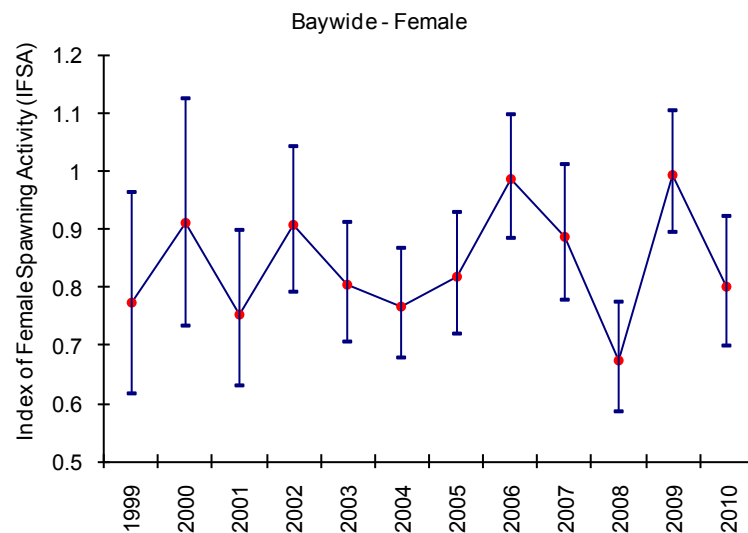


Figure 4. Index of female horseshoe crab spawning activity (IFSA) for the Delaware Bay from 1999 to 2010. Error bars are 90% confidence intervals.

Table 4. Indices of baywide male and female horseshoe crab spawning activity (ISA), number of beaches surveyed, standard errors (SE), coefficient of variations (CV), 90% confidence intervals (CI) and sex ratio for the Delaware Bay from 1999 to 2010.

Year	Beaches Surveyed	Male				Female				Annual Sex Ratio (M:F)
		ISA	90% CI	SE	CV (%)	ISA	90% CI	SE	CV (%)	
1999	17	2.50	1.86, 3.37	0.45	18	0.77	0.62, 0.97	0.10	13	3.2
2000	22	2.96	2.31, 3.80	0.45	15	0.91	0.74, 1.13	0.12	13	3.2
2001	22	2.37	1.91, 2.95	0.31	13	0.75	0.63, 0.90	0.08	10	3.1
2002	23	2.86	2.45, 3.34	0.27	9	0.91	0.79, 1.04	0.07	8	3.1
2003	23	2.89	2.50, 3.33	0.25	9	0.80	0.71, 0.91	0.06	8	3.6
2004	24	2.93	2.55, 3.36	0.24	8	0.77	0.68, 0.87	0.06	7	3.8
2005	23	3.23	2.79, 3.74	0.29	9	0.82	0.72, 0.93	0.07	9	3.9
2006	24	3.99	3.49, 4.56	0.33	8	0.99	0.89, 1.10	0.07	7	4.0
2007	24	4.22	3.63, 4.90	0.38	9	0.89	0.78, 1.01	0.07	8	4.7
2008	25	2.30	1.83, 2.90	0.32	14	0.68	0.59, 0.78	0.06	9	3.4
2009	26	4.67	4.11, 5.29	0.36	8	1.00	0.89, 1.11	0.06	6	4.7
2010	25	3.39	2.93, 3.94	0.31	9	0.80	0.70, 0.92	0.07	8	4.2

Baywide Spawning Activity - Males

Sex-specific harvest requirements contained in Addendum IV to the Interstate Fishery Management Plan for Horseshoe Crab (ASMFC 2006) for Delaware and New Jersey (specifically a male-only harvest) prompted an examination of male spawning abundance. Male spawning activity significantly increased (Slope = 0.12, SE = 0.05, 90% CI = 0.03 to 0.22, P = 0.04) from 1999 to 2010 (Figure 5; Table 4). Coefficients of variation for the male component of the survey were below 20% for the entire sampling.

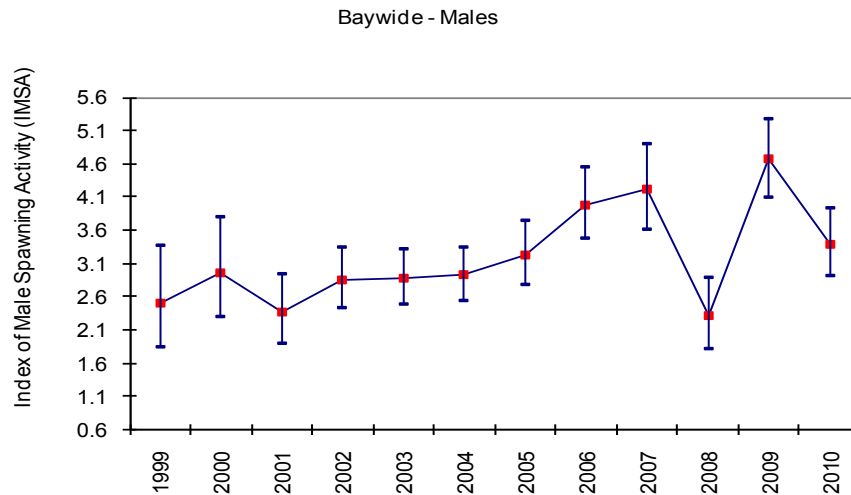


Figure 5. Index of male horseshoe crab spawning activity (IMSA) for the Delaware Bay from 1999 to 2010. Error bars are 90% confidence intervals.

Survey Sex Ratios

Current horseshoe crab harvest management strategies in the Delaware Bay area favor the harvest of male crabs. Concern was expressed that these strategies may cause spawning sex ratios (M:F) to drop and negatively affect spawning and egg fertilization. Annual sex ratio has ranged from 3.1 to 4.7 over the course of the survey and has been ≥ 4.0 in 4 of the last 5 years (Table 4).

Recommendations from Shorebird Technical Committee

The Shorebird Technical Committee (SBTC) requested a summary of baywide spawning activity by half month periods, which is important for understanding the synchronization of bird migration with horseshoe crab spawning. Lunar periods are essentially half-month periods. This information is provided in Figure 6 and Table 6.

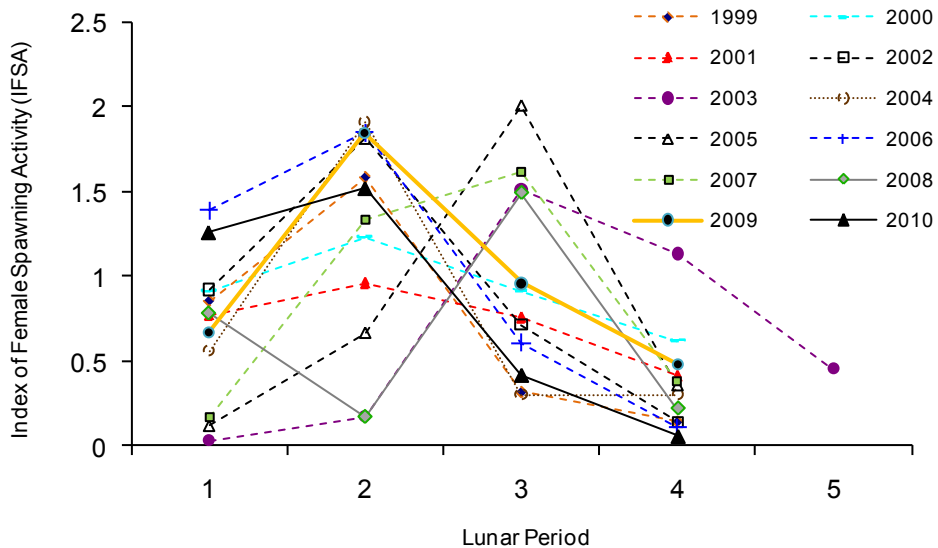


Figure 6. Baywide horseshoe crab spawning activity, expressed as mean number of spawning female crabs per m^2 per night, by lunar period for the years 1999 to 2010.

Table 6. Baywide horseshoe crab spawning activity, expressed as mean number of spawning female crabs per m² per night, by lunar period for the years 1999 to 2010.

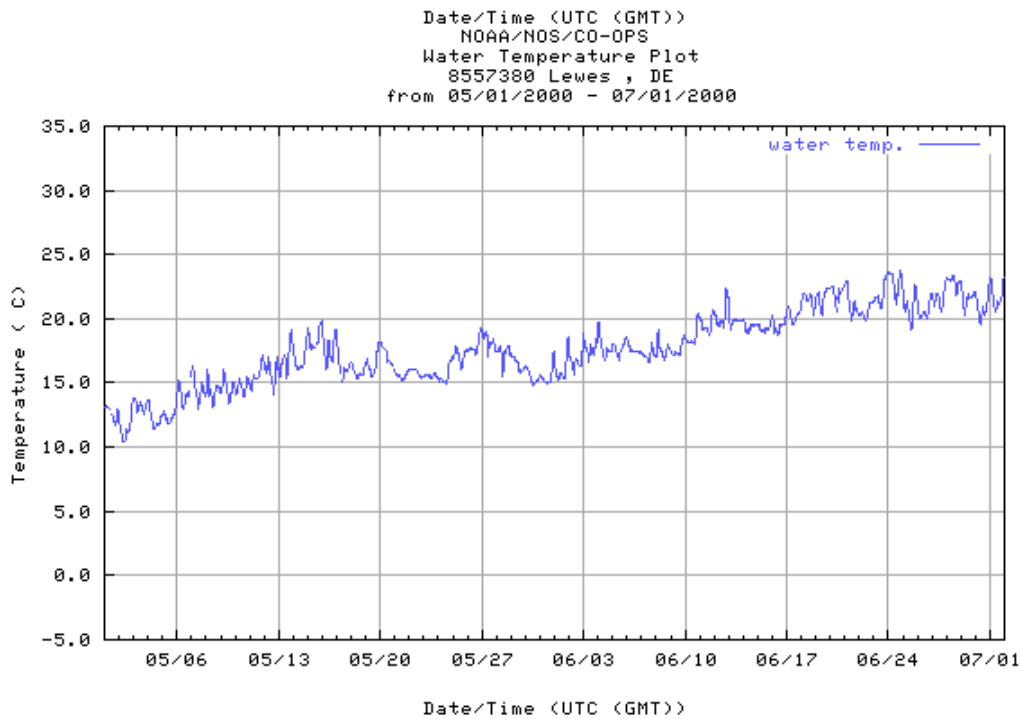
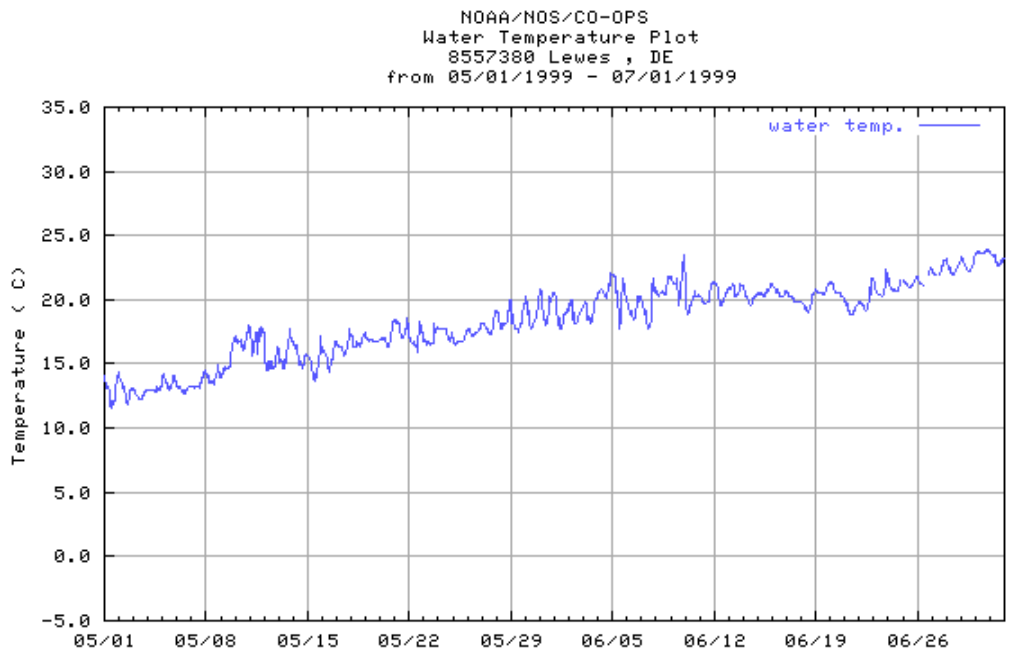
Year	Lunar Period				
	1	2	3	4	5
1999	0.86	1.58	0.32	0.15	
2000	0.92	1.23	0.91	0.62	
2001	0.77	0.96	0.76	0.42	
2002	0.92	1.81	0.71	0.14	
2003	0.04	0.17	1.51	1.13	0.46
2004	0.56	1.91	0.30	0.30	
2005	0.12	0.67	2.00	0.36	
2006	1.39	1.85	0.61	0.11	
2007	0.17	1.34	1.61	0.38	
2008	0.78	0.17	1.49	0.22	
2009	0.67	1.84	0.96	0.48	
2010	1.26	1.52	0.42	0.06	

Though the SBTC requested, “an analysis of just the beaches consistently sampled for all years of the study”, this would be contrary to the survey’s design. Appendix II, however, provides a summary of spawning activity by beach for all years.

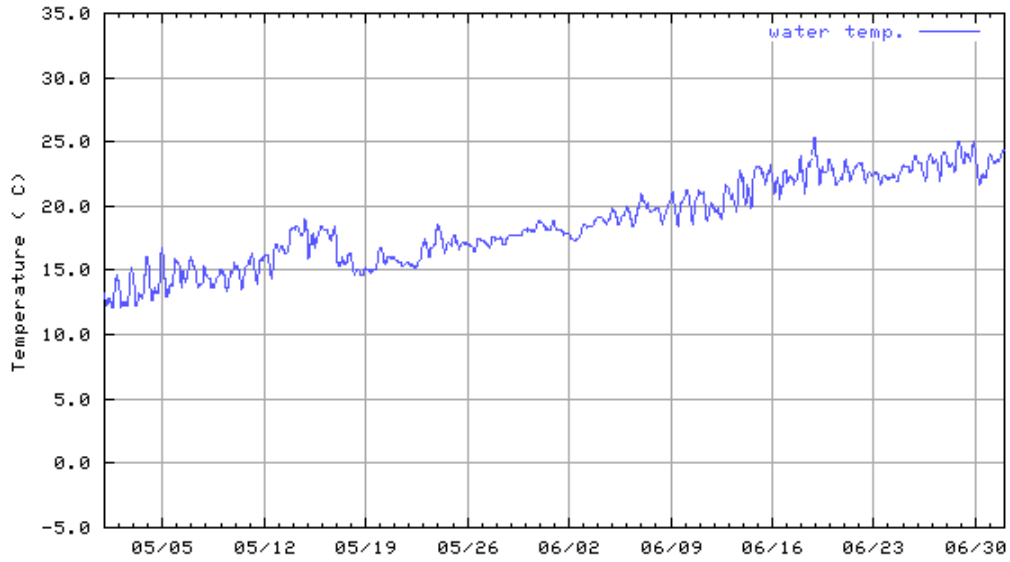
Literature Cited

- Atlantic States Marine Fisheries Commission (ASMFC). 1998. Interstate fishery management plan for horseshoe crab. Fishery Management Report No. 32, Atlantic States Marine Fisheries Commission, Washington D.C.
- Atlantic States Marine Fisheries Commission (ASMFC). 2006. Addendum IV to the Interstate Fishery Management Plan for Horseshoe Crab. Fishery Management Report No. 32d, Atlantic States Marine Fisheries Commission, Washington D.C.
- Carmichael, R.H., D. Rutecki and I. Valiela. 2003. Abundance and population structure of the Atlantic horseshoe crab *Limulus polyphemus* in Pleasant Bay, Cape Cod. *Marine Ecol. Prog. Ser.* 246:225-239.
- Finn, J.J., C.N. Shuster, Jr. and B.L. Swan. 1991. *Limulus* spawning activity on Delaware Bay shores 1990. Finn-Tech Inc., Cape May Courthouse, NJ.
- Maio, K.J. 1998. Quantitative description of the temporal and spatial patterns in spawning activity of the horseshoe crab, *Limulus polyphemus*. Master's thesis. University of Maryland Eastern Shore, Princess Anne, Maryland.
- Smith, D.R., P.S. Pooler, B.L. Swan, S.F. Michels, W.R. Hall, P.J. Himchak, and M.J. Millard. 2002. Spatial and temporal distribution of horseshoe crab (*Limulus polyphemus*) spawning in Delaware Bay: implications for monitoring. *Estuaries* 25(1):115-125.
- Smith D.R. and S. Bennett. 2005. Horseshoe crab spawning activity in Delaware Bay: 1999 – 2004. Report to the ASMFC Horseshoe Crab Management Board. Unpublished.
- Smith, D.R., and S.F. Michels. 2006. Seeing the elephant: importance of spatial and temporal coverage in a large-scale volunteer-based program to monitor horseshoe crabs. *Fisheries* 31(10):485-491.

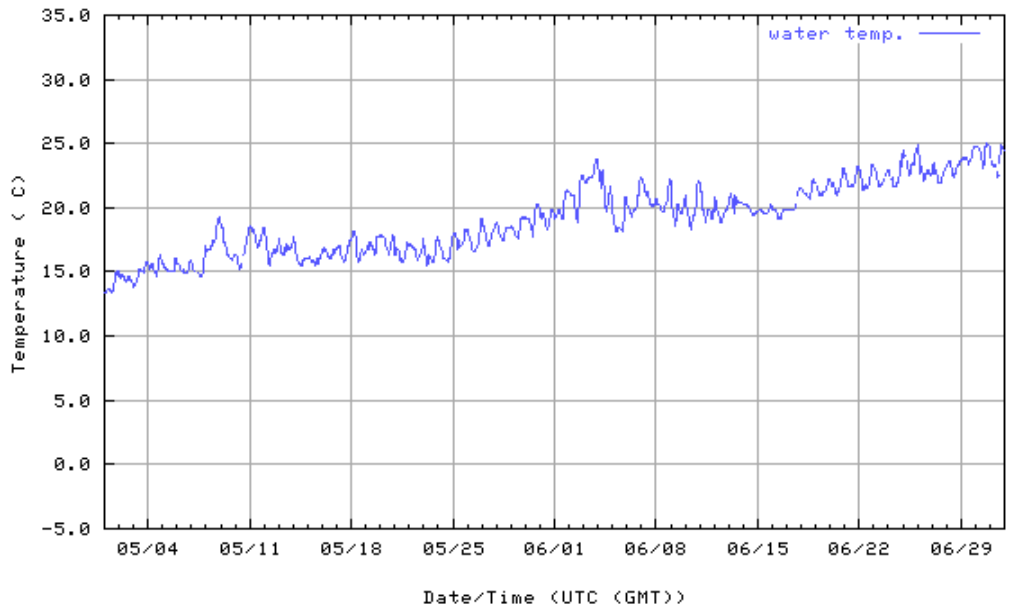
APPENDIX I. Water temperature data from Lewes, DE (Station identification Number 8557380; Latitude 38° 46.9' N / Longitude 75° 7.2' W) for the years 1999 through 2009. Source: Center for Operational Oceanographic Products and Services (CO-OPS).



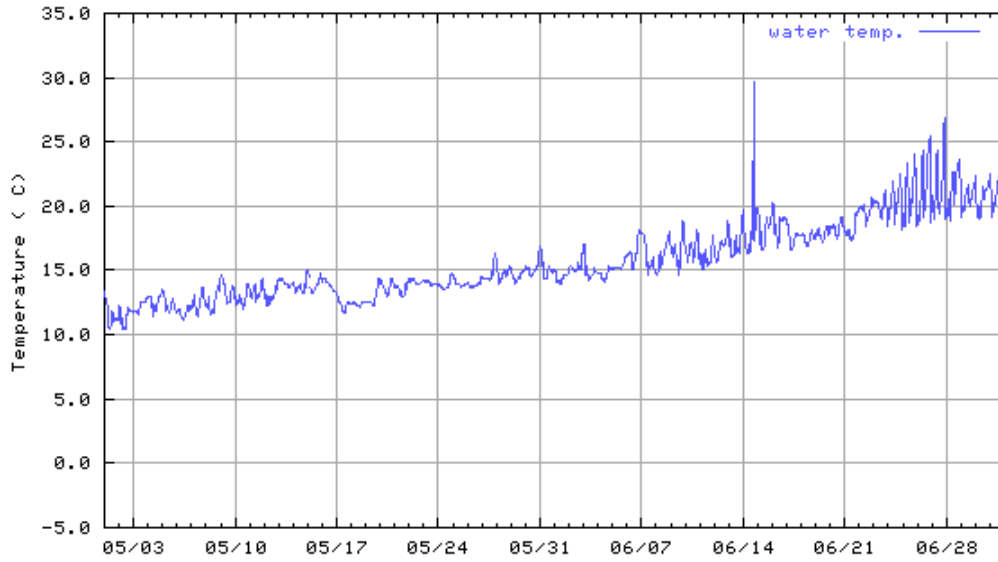
NOAA/NOS/CO-OPS
Water Temperature Plot
8557380 Lewes, DE
from 05/01/2001 - 07/01/2001



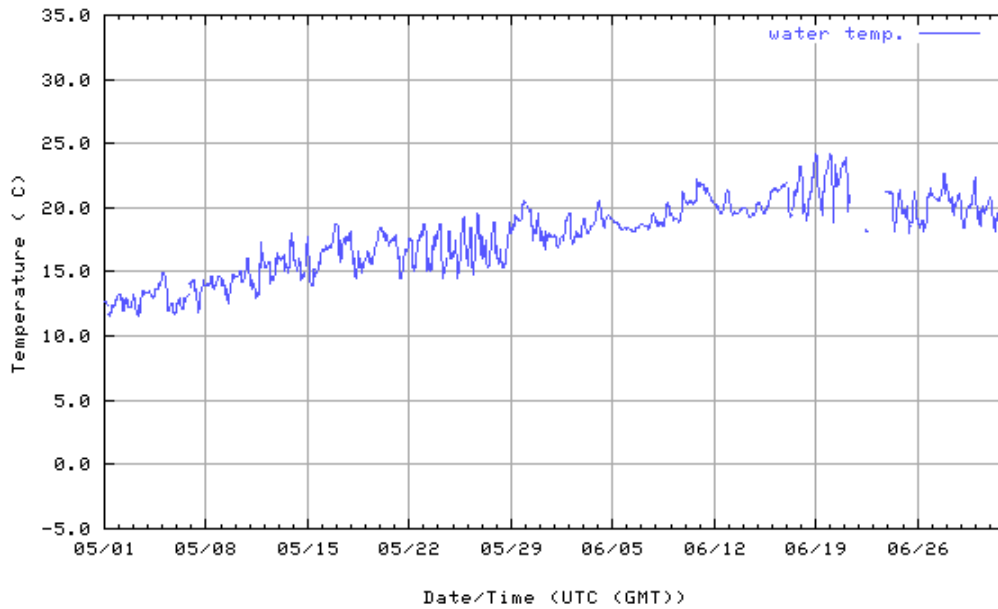
Date/Time (UTC (GMT))
NOAA/NOS/CO-OPS
Water Temperature Plot
8557380 Lewes, DE
from 05/01/2002 - 07/01/2002



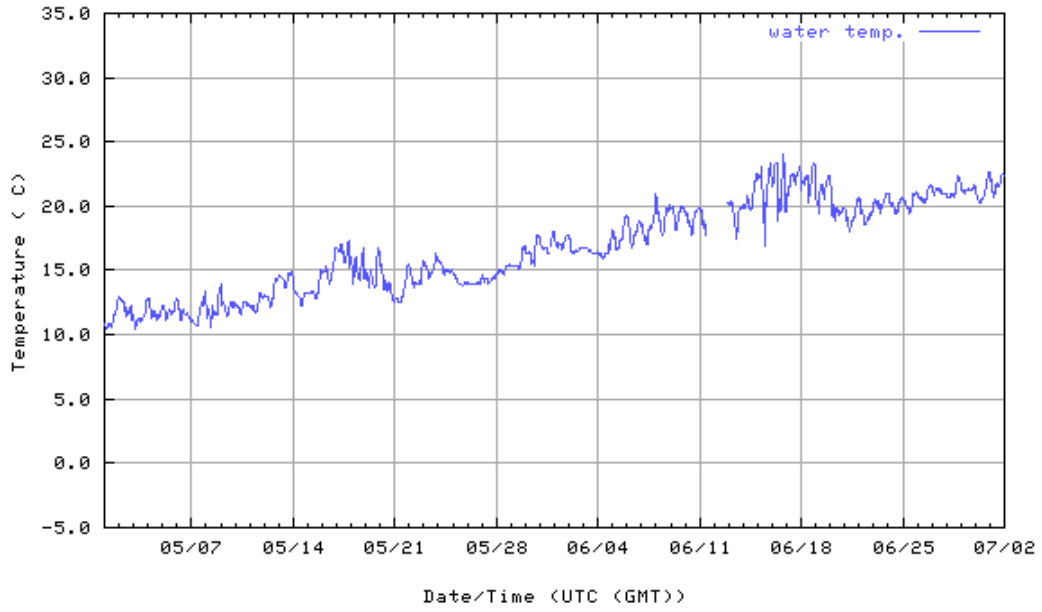
NOAA/NOS/CO-OPS
Water Temperature Plot
8557380 Lewes, DE
from 05/01/2003 - 07/01/2003



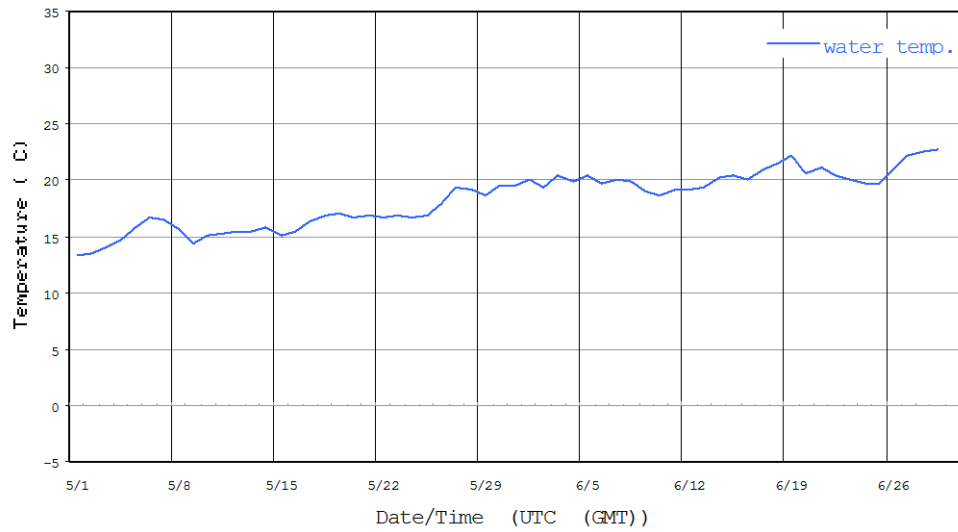
Date/Time (UTC (GMT))
NOAA/NOS/CO-OPS
Water Temperature Plot
8557380 Lewes, DE
from 05/01/2004 - 07/01/2004



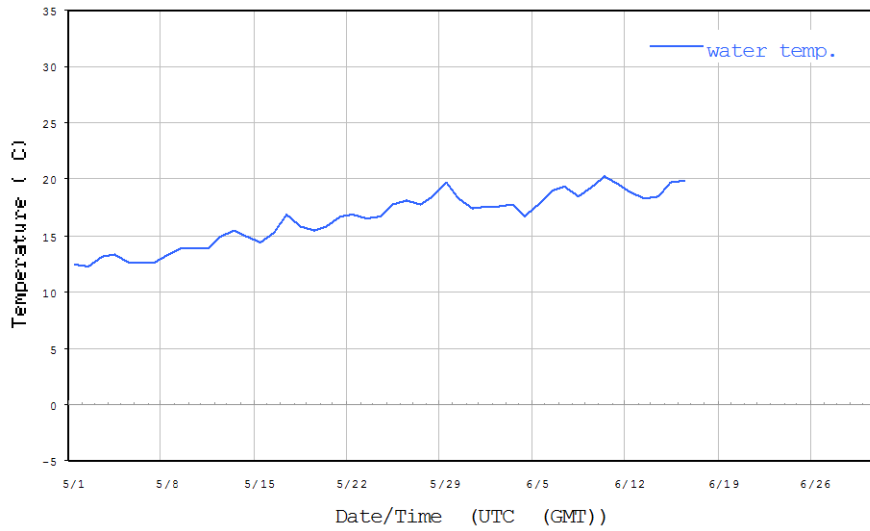
NOAA/NOS/CO-OPS
Water Temperature Plot
8557380 Lewes , DE
from 05/01/2005 - 07/01/2005



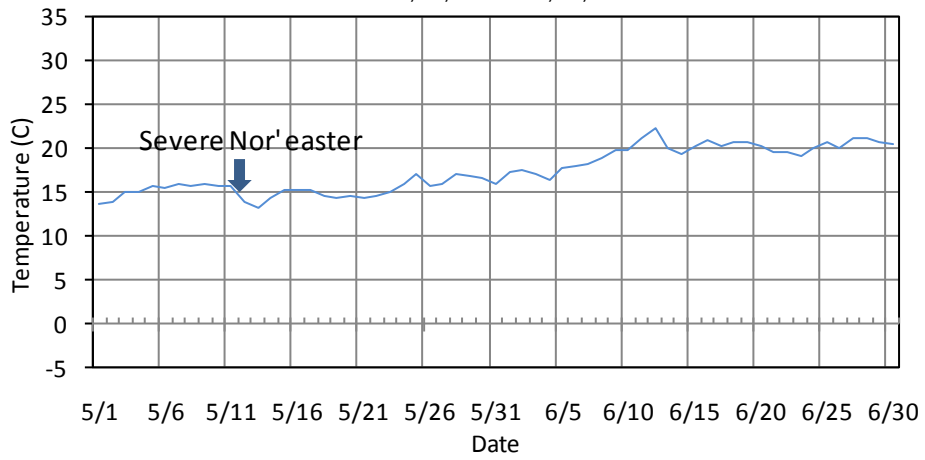
NOAA/NOS/CO-OPS
Water Temperature Plot
8557380 Lewes , DE
from 05/01/2006 - 07/01/2006



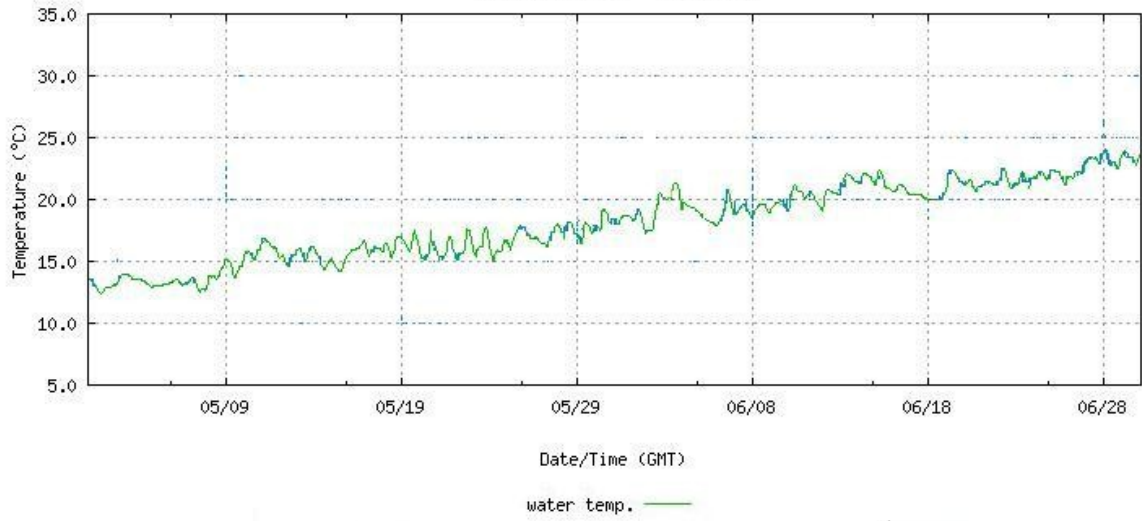
NOAA/NOS/CO-OPS
Water Temperature Plot
8557380 Lewes, DE
from 05/01/2007 - 07/01/2007



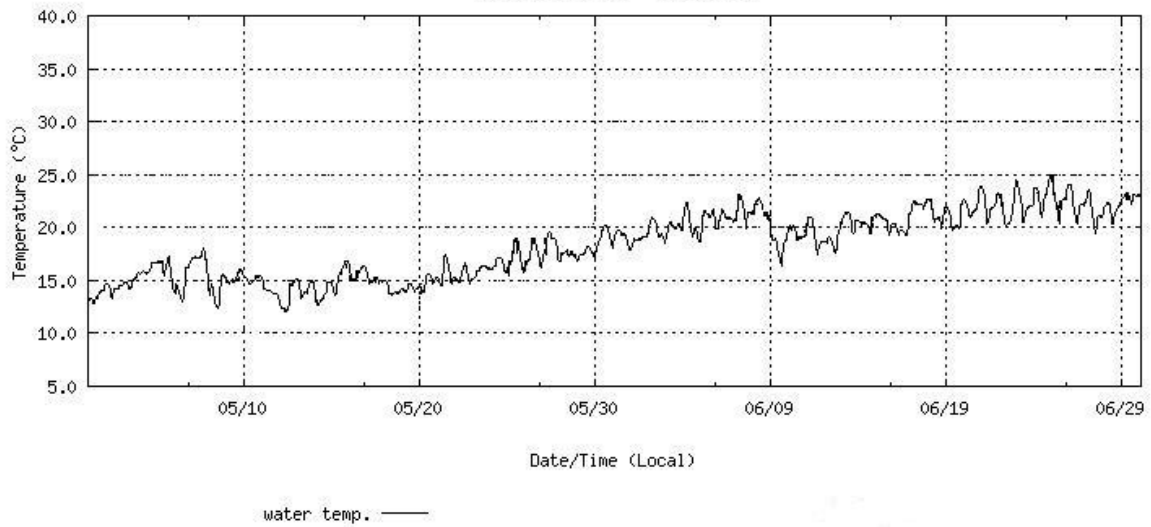
NOAA/NOS/CO-OPS
Water Temperature Plot
8557380 Lewes, DE
from 2008/05/01 - 2008/06/30



NOAA/NOS/CO-OPS
Air/Water Temperature Plot
8557380 Lewes, DE
from 2009/05/01 - 2009/06/30



NOAA/NOS/CO-OPS
Air/Water Temperature Plot
8557380 Lewes, DE
from 2010/05/01 - 2010/06/30



APPENDIX II. Index of female spawning horseshoe crabs abundance, expressed as the mean number of females crabs per m² per night, for Delaware Bay beaches surveyed from 1999 to 2010.

State	Beach	1999	2000	2001	2002	2003	2004	2005	2006	2007	2008	2009	2010
DE	Bennetts Pier		0.2233	0.6399	0.4713	0.2762	0.5470	0.6992	0.6117	0.5496	0.3726	0.6393	0.2163
DE	Big Stone	0.7462	0.7290	0.8562	0.6265	0.6370	0.7617	0.8088	1.0896	1.3475	0.7064	0.7852	0.6731
DE	Broadkill	0.3197	0.0638	0.1170	0.1347	0.2083	0.1741	0.1911	0.1208	0.1775	0.5533	0.2342	0.4936
DE	Cape Henlopen				0.0857	0.1816	0.1255	0.2694	0.1000	0.0579	0.3000	0.2579	0.3191
DE	Fowlers	0.7779	0.4933	0.7033	0.2370	0.4532	0.6110	0.2148	0.4077	0.5033	0.5260	0.2057	0.4204
DE	Kitts Hummock	2.1510	2.5830	2.3545	1.4667	1.5529	1.2394	1.4175	1.7237	1.4394	1.2296	1.4828	1.3000
DE	Lewes				0.0838								
DE	North Bowers	0.8806	1.1836	1.0383	1.2142	0.9802	0.4995	0.6012	0.7479	1.1088	0.3646	0.6946	0.7489
DE	Pickering		3.3047	1.6244	1.6950	1.6417	1.6380	1.4708	1.4933	1.6350	1.9908	1.6692	1.8692
DE	Prime Hook	0.5984	0.1872	0.4446	0.5908	0.4733	0.7596	0.6500	0.7283	1.1088	0.9221	0.6092	0.9216
DE	Slaughter	1.6190	1.3254	1.0962	0.7265	1.6508	1.5237	0.6805	1.0396	1.2360	1.1005	0.7232	0.7518
DE	South Bowers		0.9196	0.8433	1.1265	0.4685	0.4796	0.6343	0.7192	1.3026	0.5700	1.0192	0.5030
DE	Ted Harvey				1.4446	1.9852	1.5220	0.8162	1.4579	1.9279	1.4746	1.1933	1.3367
DE	Woodland	0.1368	0.1033	0.0292	0.0792	0.0075	0.0012	0.0062	0.2700	0.0312	0.0000	0.0242	0.1627
NJ	East Point		0.3458										
NJ	Fortescue	0.2473				0.4184	0.5408	0.5818	0.6525	0.1600	0.3267	0.4441	0.3400
NJ	Gandys	0.4014	0.3922	0.4521	1.4122	0.5498	0.8166	0.8788	1.1652	0.8257	0.2975	1.3051	1.2432
NJ	Higbees		0.0361					0.1368			0.0321	0.1376	
NJ	Highs Beach	0.7892	0.9594	0.7950	0.4685	0.5275	0.6963	0.7583	0.6933	0.7527	0.4558	0.7267	0.5550
NJ	Kimbles	0.7063	0.8521	0.4773	0.4976	0.4970	0.4054					0.8205	0.5128
NJ	Norburys			0.4600	0.6242	0.5362	0.6707	0.9391	0.6936	0.4334	0.4133	1.1372	0.6750
NJ	North Cape May	0.2250	0.0500	0.0904	0.0845	0.1233	0.0200	0.1233	0.0229	0.0417	0.0308	0.0767	0.0236
NJ	Pierces Point		0.6138		0.6730	0.7300	0.9602	0.8275	0.7447	0.9410	0.7123	1.2721	1.1088
NJ	Raybins	0.0259											
NJ	Reeds	0.3808	0.6468	0.4049	0.8768	0.8225	0.4162	0.2398	0.9650	0.3050	0.3404	1.0676	0.5723
NJ	Sea Breeze	0.0947	0.1094	0.2991	1.6283	0.3892	0.4275	0.2088	0.8471	0.9250	0.6650	0.7725	1.0150
NJ	Cape Shore Lab	1.2452	1.3311	1.2775	0.6850	0.6283	0.9042	1.1684	0.8183	1.2610	0.3886	1.1108	0.7910
NJ	Sunset			0.1139					0.0119	0.0038	0.0097	0.1590	
NJ	Townbank			0.7362	0.3958	0.4589	0.2037			0.2883			0.3128
NJ	Villas							0.7075	0.4833		0.3431	0.6433	0.4109